

# VOR/DME RWY 31

AMARILLO/RICK HUSBAND AMARILLO INTL (A.M.A)

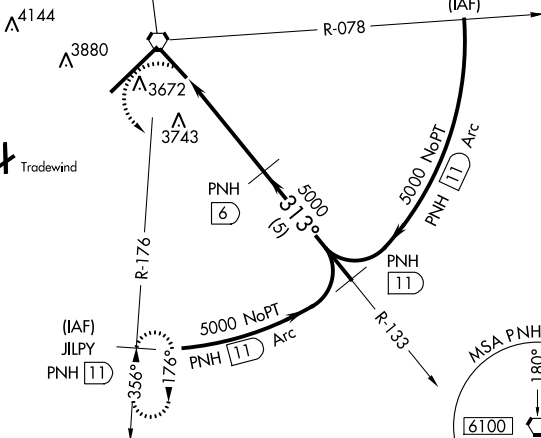
VORTAC PNH <b>116.6</b> Chan <b>113</b>	APP CRS <b>313°</b>	Rwy Idg TDZE Apt Elev	<b>7901</b> <b>3598</b> <b>3605</b>
---	------------------------	-----------------------------	---

		MISSED APPROACH: Climbing left turn to 5100 via PNH-176 to JILPY/11 DME and hold.			
ATIS <b>118.85 350.3</b>	AMARILLO APP CON* <b>119.5 307.0</b>	AMARILLO TOWER* <b>118.3(CTAF) 257.9</b>	GND CON <b>121.9 348.6</b>	CLNC DEL <b>121.65</b>	UNICOM <b>122.95</b>

△ 5049

△ 4932  
△ 4914  
△ 5047

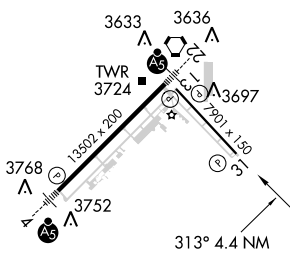
PANHANDLE  
116.6 PNH  
Chan 113



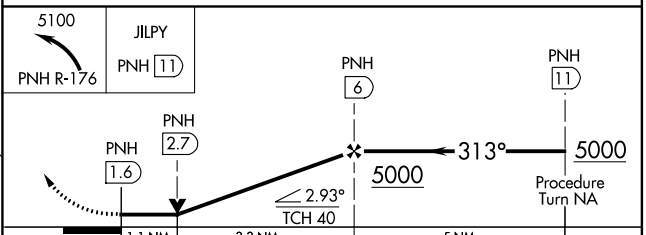
SC-2, 07 FEB 2013 to 07 MAR 2013

SC-2, 07 FEB 2013 to 07 MAR 2013

ELEV 3605	<b>D</b>	TDZE 3598
-----------	----------	-----------



REIL Rwy 13  
REIL Rwy 31  
HIRL Rws 4-22 and 13-31



CATEGORY	A	B	C	D	E
S-31	3960-1	362 (400-1)		3960-1¼	362 (400-1¼)
CIRCLING	4080-1	475 (500-1)	4080-1½ 475 (500-1½)	4240-2 635 (700-2)	4460-3 855 (900-3)

# VOR/DME RWY 31