

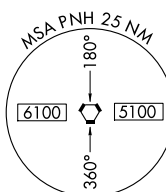
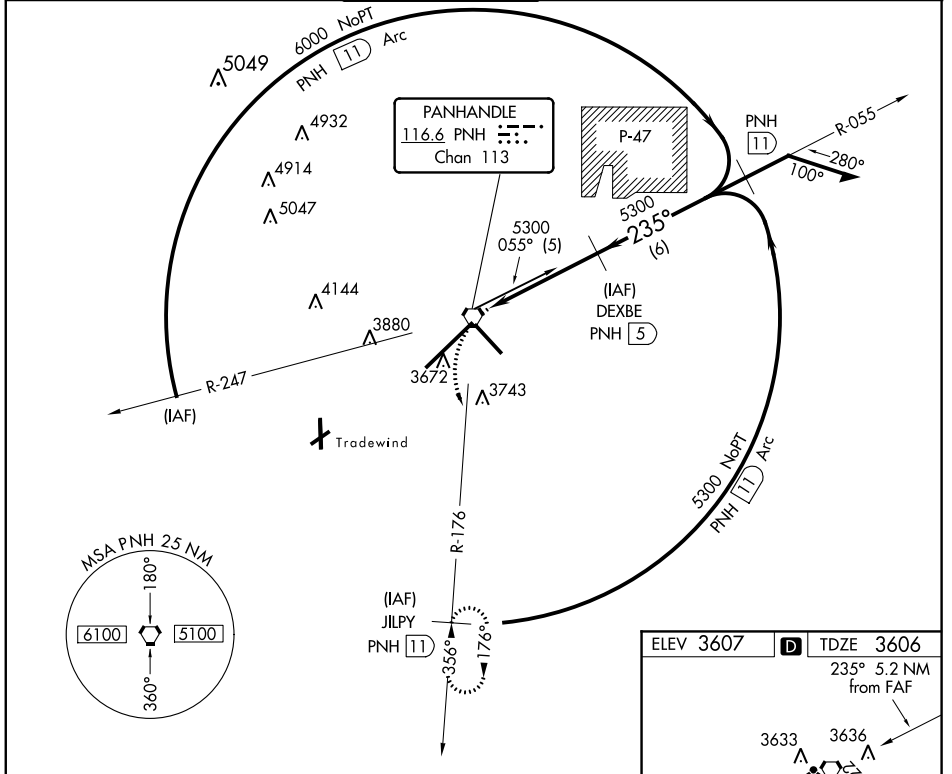
VORTAC PNH 116.6 Chan 113	APP CRS 235°	Rwy Idg TDZE Apt Elev	13502 3603 3605
---	------------------------	-----------------------------	--

VOR/DME RWY 22

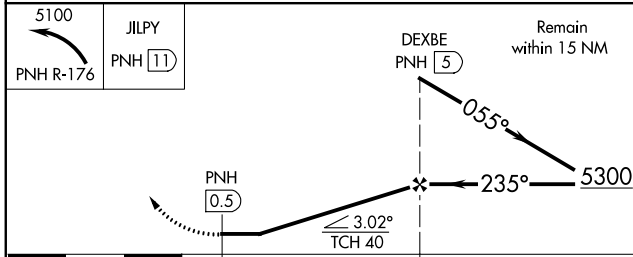
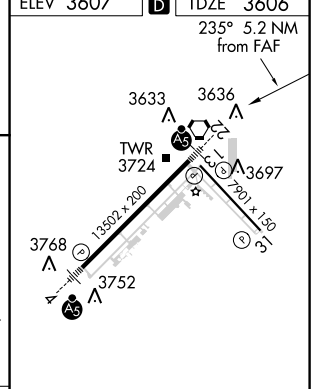
AMARILLO/ RICK HUSBAND AMARILLO INTL (A.M.A.)

ASR	For inop MALSRS, increase S-22 visibility Cat D and E to 1/4.	MALSRS 	MISSED APPROACH: Climbing left turn to 5100 via PNH R-176 to JILPY/11 DME and hold.		
------------	---	-------------------	---	--	--

ATIS 118.85 350.3	AMARILLO APP CON* 119.5 307.0	AMARILLO TOWER* 118.3 (CTAF) 257.9	GND CON 121.9 348.6	CLNC DEL 121.65	UNICOM 122.95
-----------------------------	---	--	-------------------------------	---------------------------	-------------------------



ELEV 3607	D	TDZE 3606
-----------	----------	-----------



CATEGORY	A	B	C	D	E
S-22	3960-1/2 354 (400-1/2)			3960-1 354 (400-1)	
CIRCLING	4080-1	473 (500-1)	4080-1/2 473 (500-1/2)	4240-2 633 (700-2)	4460-3 853 (900-3)

REIL Rwy 13
REIL Rwy 31
HIRL Rwy 4-22 and 13-31

SC-2, 07 FEB 2013 to 07 MAR 2013

SC-2, 07 FEB 2013 to 07 MAR 2013