

WAAS CH <b>82718</b> <b>W04A</b>	APP CRS <b>038°</b>	Rwy Idg <b>13502</b> TDZE <b>3607</b> Apt Elev <b>3607</b>
--	------------------------	--

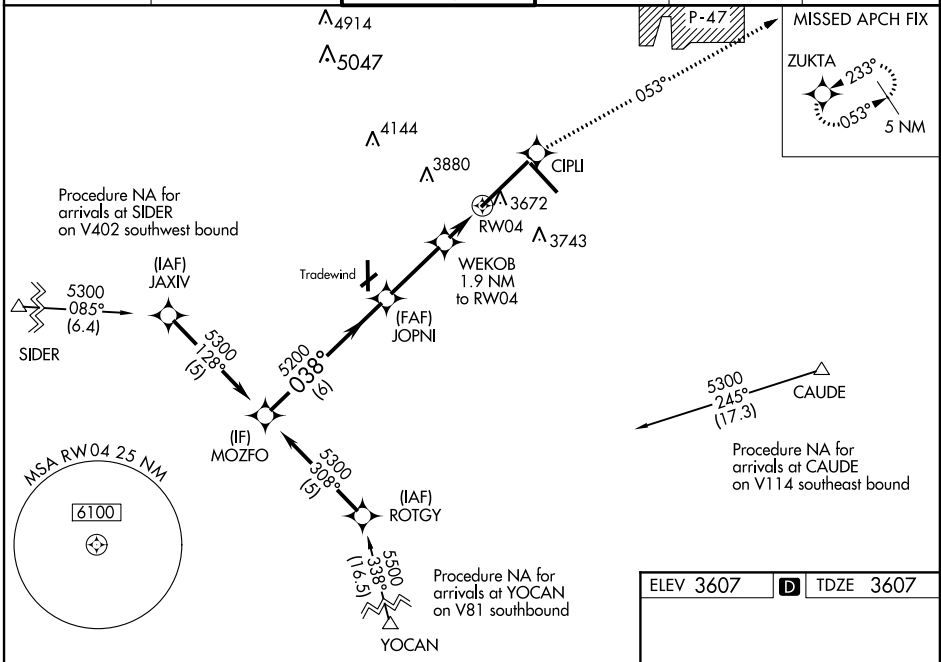
# RNAV (GPS) Y RWY 4

AMARILLO/RICK HUSBAND AMARILLO INTL (AMA)

For uncompensated Baro-VNAV systems, LNAV/VNAV NA below -22°C (-7°F) or above 41°C (105°F).  
 DME/DME RNP-0.3 NA. When local altimeter setting not received, use Baro altimeter setting and increase all DA 153 feet and all MDA 160 feet, increase LPV all Cats visibility 1/4 mile, LNAV/VNAV all Cats visibility 1/2 mile, LNAV Cats C and D visibility 1/4 mile and Cat E visibility 1/2 mile, Circling Cat C visibility 1/4 mile and Circling Cat D visibility 1/2 mile. Baro-VNAV and VDP NA with Baro altimeter setting. For inop MALSBR, increase LPV Cat E visibility to RVR 4000. LNAV/VNAV Cat E visibility ASR to 1 1/2 mile, LNAV Cat D visibility to RVR 6000 and Cat E visibility 1 1/2 mile. For inop MALSBR with Baro altimeter setting, increase LPV all Cats visibility to RVR 6000, LNAV/VNAV all Cats visibility 2 miles, LNAV Cat D visibility to 1 3/4 mile, and Cat E visibility to 2 miles.

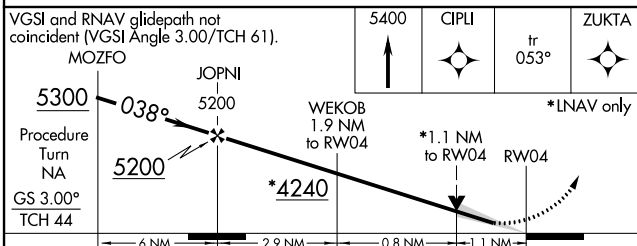
**MALSBR** MISSED APPROACH:  
 Climb to 5400 direct CIPLI and on track 053° to ZUKTA and hold.

ATIS <b>118.85 350.3</b>	AMARILLO APP CON* <b>119.5 307.0</b>	AMARILLO TOWER* <b>118.3 (CTAF) 257.9</b>	GND CON <b>121.9 348.6</b>	CLNC DEL <b>121.65</b>	UNICOM <b>122.95</b>
-----------------------------	---	--	-------------------------------	---------------------------	-------------------------



SC-2, 07 FEB 2013 to 07 MAR 2013

SC-2, 07 FEB 2013 to 07 MAR 2013



ELEV 3607	<b>D</b> TDZE 3607
-----------	--------------------

3633 3636

TWR 3724

3697

3752

3768

038° to RW04

HIRL Rwy 4-22 and 13-31

REIL Rwy 13

REIL Rwy 31

CATEGORY	A	B	C	D	E
LPV DA		3807/24	200 (200-1/2)		
LNAV/VNAV DA		4028/50	421 (500-1)		
LNAV MDA	4020/24	413 (500-1/2)	4020/40 413 (500-3/4)	4020/50	413 (500-1)
CIRCLING	4080-1	473 (500-1)	4080-1 1/2 473 (500-1 1/2)	4240-2 633 (700-2)	4460-3 853 (900-3)