

WAAS CH 82319 W31A	APP CRS 310°	Rwy Idg 7901 TDZE 3601 Apt Elev 3607
--	------------------------	---

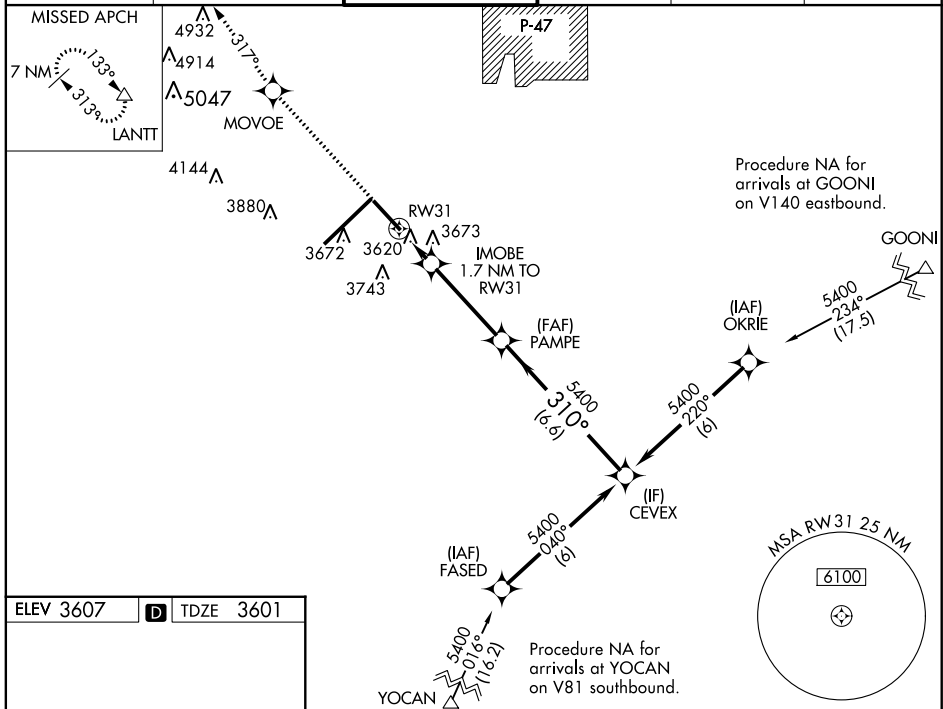
RNAV (GPS) Y RWY 31

AMARILLO/RICK HUSBAND AMARILLO INTL (AMA)

ASR For uncompensated Baro-VNAV systems, LNAV/VNAV NA below -22°C (-7°F) or above 41°C (105°F). DME/DME RNP-0.3 NA. When local altimeter setting not received, use Borger altimeter setting and increase all DA 153 feet and all MDA 160 feet, increase LPV all Cats visibility ½ mile, LNAV/VNAV all Cats visibility ¾ mile, LNAV Cat C visibility ½ mile and Cat D visibility ½ mile, Circling Cat C visibility ¼ mile and Cat D visibility ½ mile. Baro-VNAV and VDP NA with Borger altimeter setting.

MISSED APPROACH: Climb to 6100 direct MOVOE and on track 317° to LANTT and hold.

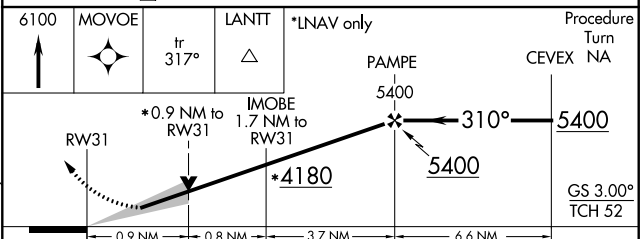
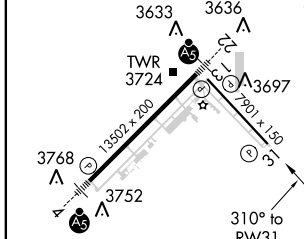
ATIS 118.85 350.3	AMARILLO APP CON* 119.5 307.0	AMARILLO TOWER* 118.3 (CTAF) 257.9	GND CON 121.9 348.6	CLNC DEL 121.65	UNICOM 122.95
-----------------------------	---	--	-------------------------------	---------------------------	-------------------------



SC-2, 07 FEB 2013 to 07 MAR 2013

SC-2, 07 FEB 2013 to 07 MAR 2013

ELEV 3607	D	TDZE 3601
-----------	----------	-----------



CATEGORY	A	B	C	D
LPV DA		3801-¾	200 (200-¾)	
LNAV/VNAV DA		3983-1¼	382 (400-1¼)	
LNAV MDA		3940-1	339 (400-1)	
CIRCLING	4080-1	473 (500-1)	4080-1½ 473 (500-1½)	4240-2 633 (700-2)

REIL Rwy 13
REIL Rwy 31
HIRL Rwy 4-22 and 13-31