

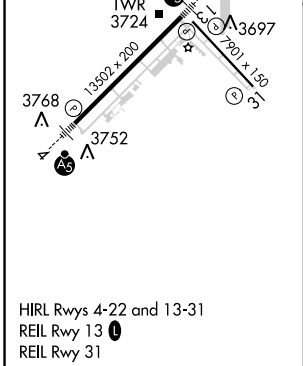
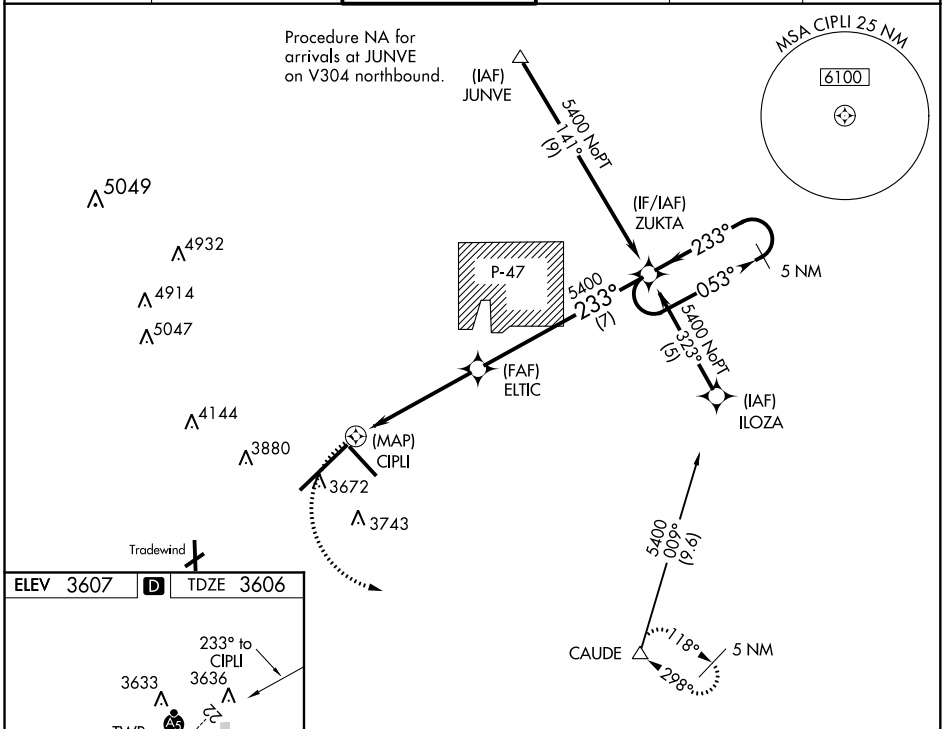
APP CRS <b>233°</b>	Rwy Idg <b>13,502</b>
	TDZE <b>3606</b>
	Apt Elev <b>3607</b>

# RNAV (GPS) Y RWY 22

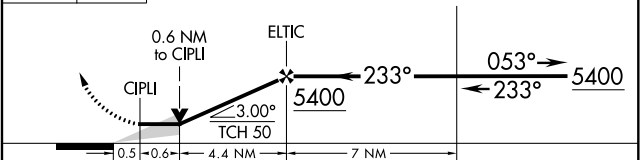
AMARILLO/ RICK HUSBAND AMARILLO INTL (A.M.A)

<p>For inop MALSRS, increase LNAV Cat D visibility to 1 1/4 mile and Cat E visibility to 1 1/2 mile. DME/DME RNP-0.3 NA. When local altimeter setting not received, use Borger altimeter setting and increase all MDA 160 feet, increase LNAV Cat C visibility 1/4 mile, Cat D visibility 3/4 mile, Cat E visibility 1 mile, Circling Cat C visibility 1/4 mile and Cat D visibility 1/2 mile. VDP NA with Borger altimeter setting. Inop table does not apply to LNAV Cats D and E with Borger altimeter setting.</p>	<p>MALSRS</p>	<p>MISSED APPROACH: Climbing left turn to 5400 direct CAUDE and hold</p>

ATIS <b>118.85 350.3</b>	AMARILLO APP CON* <b>119.5 307.0</b>	AMARILLO TOWER* <b>118.3(CTAF) 257.9</b>	GND CON <b>121.9 348.6</b>	CLNC DEL <b>121.65</b>	UNICOM <b>122.95</b>
-----------------------------	---	---	-------------------------------	---------------------------	-------------------------



5400 CAUDE	VGSI and descent angles not coincident (VGSI Angle 3.00/TCH 77).	5 NM Holding Pattern
------------	--	----------------------



CATEGORY	A	B	C	D	E
LNAV MDA	4020-1/2	414 (500-1/2)	4020-3/4 414 (500-3/4)	4020-1	414 (500-1)
CIRCLING	4080-1	473 (500-1)	4080-1 1/2 473 (500-1 1/2)	4240-2 633 (700-2)	4460-3 853 (900-3)

# RNAV (GPS) Y RWY 22

SC-2, 07 FEB 2013 to 07 MAR 2013

SC-2, 07 FEB 2013 to 07 MAR 2013