

APP CRS	Rwy Idg	13,502
038°	TDZE	3607
	Apt Elev	3607

RNAV (RNP) Z RWY 4

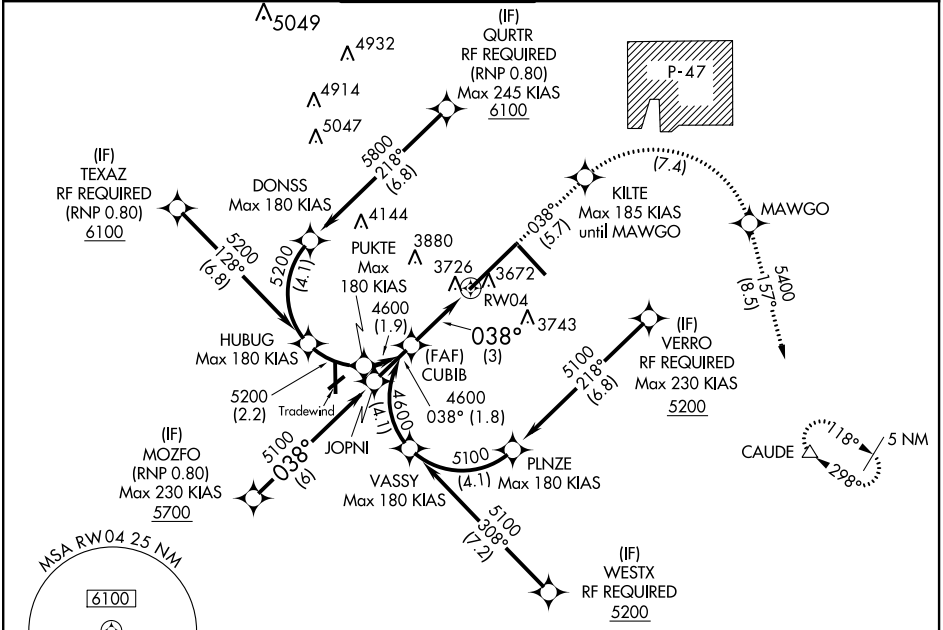
AMARILLO/RICK HUSBAND AMARILLO INTL (AMA)

ASR RF and GPS Required. For uncompensated Baro-VNAV systems, procedure NA below -16°C (4°F) or above 40°C (104°F). For inop MALSRL increase RNP 0.12 visibility all Cats to RVR 5000 and increase RNP 0.30 visibility all Cats to 1½.



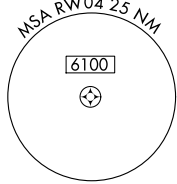
MISSED APPROACH: Climb to 5400 on track 038° to KILTE, right turn to MAWGO, then on track 157° to CAUDE and hold.

ATIS	AMARILLO APP CON*	AMARILLO TOWER*	GND CON	CLNC DEL	UNICOM
118.85 350.3	119.5 307.0	118.3(CTAF) 257.9	121.9 348.6	121.65	122.95



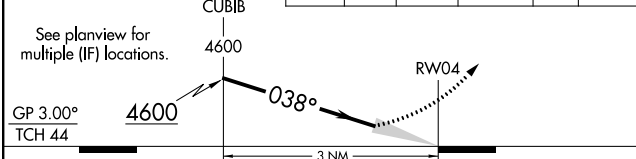
SC-2, 07 FEB 2013 to 07 MAR 2013

SC-2, 07 FEB 2013 to 07 MAR 2013



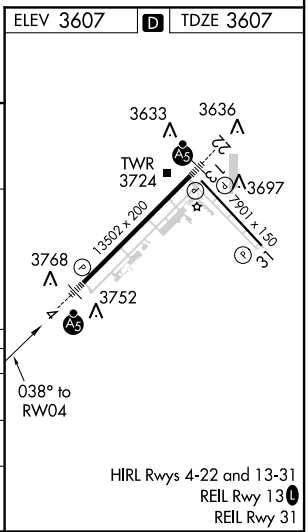
RADAR REQUIRED

VGSI and RNAV glidepath not coincident (VGSI Angle 3.00/TCH 61).	5400 tr 038°	KILTE	MAWGO	CAUDE tr 157°
--	-----------------	-------	-------	------------------



CATEGORY	A	B	C	D
RNP 0.12 DA		3926/40	319 (400-¾)	
RNP 0.30 DA		4055/60	448 (500-1¼)	

AUTHORIZATION REQUIRED



HIRL Rwy 4-22 and 13-31
REIL Rwy 13
REIL Rwy 31