

APP CRS 309°	Rwy Idg 7901
	TDZE 3601
	Apt Elev 3607

RNAV (RNP) Z RWY 31

AMARILLO/ RICK HUSBAND AMARILLO INTL (AMA)

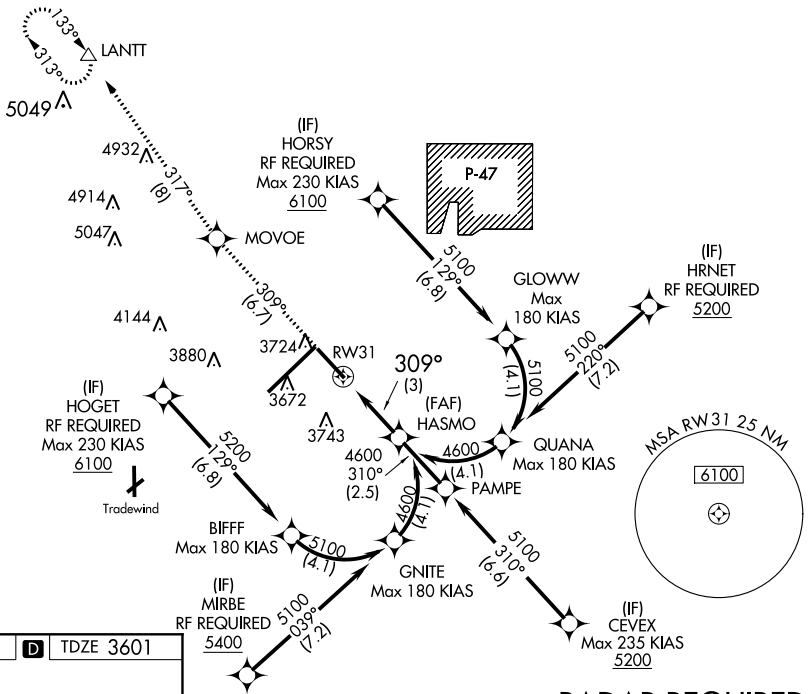
GPS REQUIRED. For uncompensated Baro-VNAV systems, procedure NA below -16°C (4°F) or above 40°C (104°F).

MISSED APPROACH: Climb to 6100 on track 309° to MOVOE and on track 317° to LANTT and hold.

ATIS 118.85 350.3	AMARILLO APP CON* 119.5 307.0	AMARILLO TOWER* 118.3(CTAF) 257.9	GND CON 121.9 348.6	CLNC DEL 121.65	UNICOM 122.95
-----------------------------	---	---	-------------------------------	---------------------------	-------------------------

SC-2, 07 FEB 2013 to 07 MAR 2013

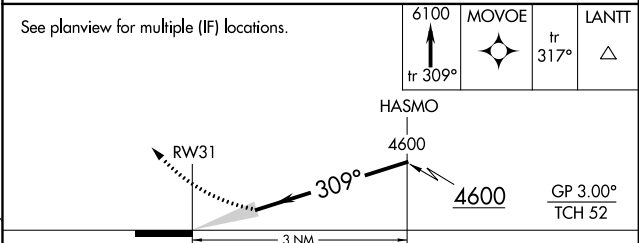
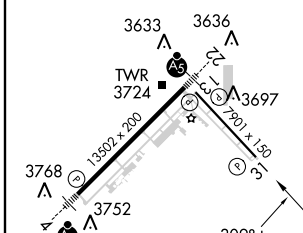
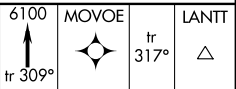
SC-2, 07 FEB 2013 to 07 MAR 2013



ELEV 3607	D	TDZE 3601
-----------	----------	-----------

RADAR REQUIRED

See planview for multiple (IF) locations.



CATEGORY	A	B	C	D
RNP 0.17 DA		3858-1	257 (300-1)	
RNP 0.30 DA		3922-1	321 (400-1)	

AUTHORIZATION REQUIRED

REIL Rwy 13
 REIL Rwy 31
 HIRL Rwy 4-22 and 13-31