

APP CRS 218°	Rwy Idg TDZE Apt Elev	13,502 3606 3607
------------------------	-----------------------------	---

RNAV (RNP) Z RWY 22

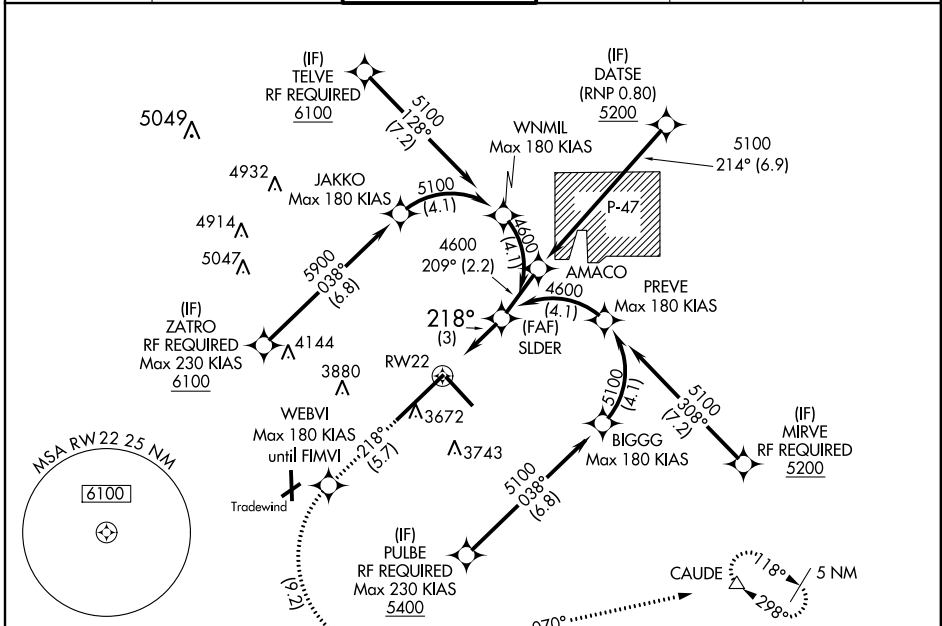
AMARILLO/RICK HUSBAND AMARILLO INTL (AMA)

ASR RF and GPS Required. For uncompensated Baro-VNAV systems, procedure NA below -16°C (4°F) or above 40°C (104°F). For inop MALSRL increase RNP 0.14 visibility all Cats to 1 and increase RNP 0.30 visibility all Cats to 1 1/4. When VGSI inop, procedure NA at night.



MISSED APPROACH: Climb to 5400 on track 218° to WEBVI, left turn to FIMVI, then on track 070° to CAUDE and hold.

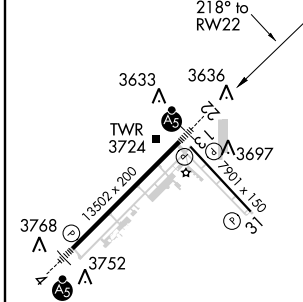
ATIS 118.85 350.3	AMARILLO APP CON* 119.5 307.0	AMARILLO TOWER* 118.3(CTAF) 257.9	GND CON 121.9 348.6	CLNC DEL 121.65	UNICOM 122.95
-----------------------------	---	---	-------------------------------	---------------------------	-------------------------



SC-2, 07 FEB 2013 to 07 MAR 2013

SC-2, 07 FEB 2013 to 07 MAR 2013

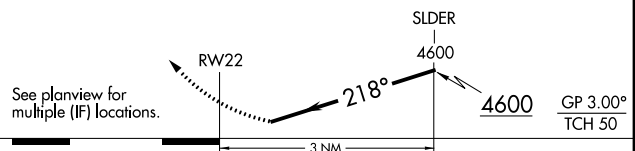
ELEV 3607	D	TDZE 3606
-----------	----------	-----------



HIRL Rwys 4-22 and 13-31
REIL Rwy 13
REIL Rwy 31

RADAR REQUIRED

5400	WEBVI	FIMVI	CAUDE
tr 218°			tr 070°



CATEGORY	A	B	C	D
RNP 0.14 DA		3894-3/4	288 (300-3/4)	
RNP 0.30 DA		3964-3/4	358 (400-3/4)	

AUTHORIZATION REQUIRED