

APP CRS 129°	Rwy Idg 7901	TDZE 3603
	Apt Elev 3607	

RNAV (RNP) Z RWY 13

AMARILLO/RICK HUSBAND AMARILLO INTL (AMA)

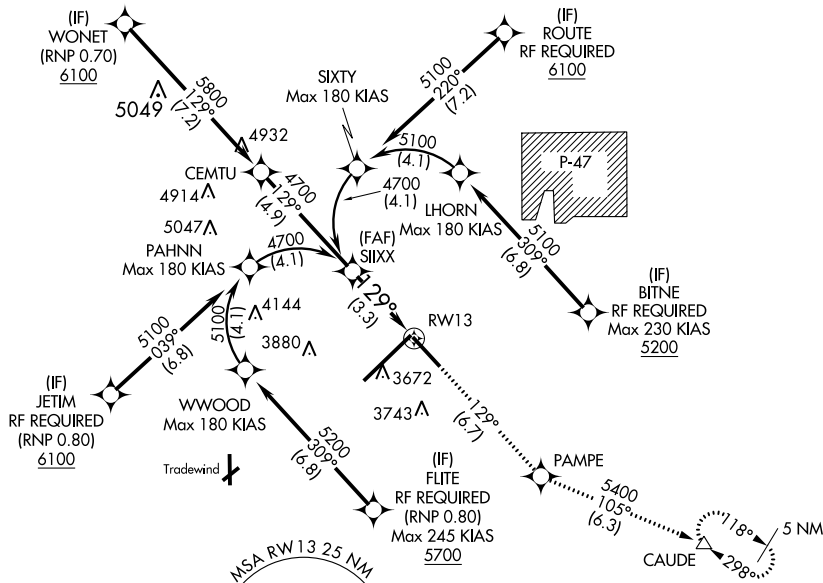
GPS required. For uncompensated Baro-VNAV systems, procedure NA below -16°C (4°F) or above 40°C (104°F).

MISSED APPROACH: Climb to 5400 on track 129° to PAMPE and on track 105° to CAUDE and hold.

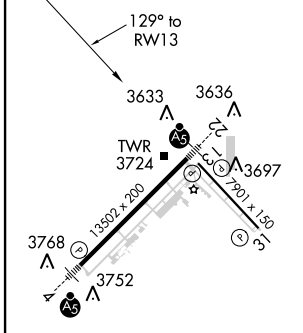
ATIS 118.85 350.3	AMARILLO APP CON* 119.5 307.0	AMARILLO TOWER* 118.3(CTAF) 257.9	GND CON 121.9 348.6	CLNC DEL 121.65	UNICOM 122.95
-----------------------------	---	---	-------------------------------	---------------------------	-------------------------

SC-2, 07 FEB 2013 to 07 MAR 2013

SC-2, 07 FEB 2013 to 07 MAR 2013



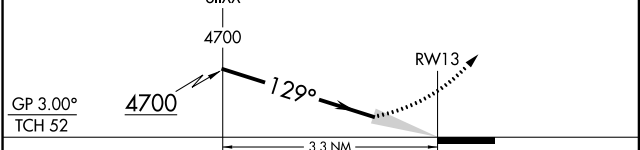
ELEV 3607	D	TDZE 3603
-----------	----------	-----------



RADAR REQUIRED

See planview for multiple (IF) locations.

5400 ↑ tr 129°	PAMPE ◆	CAUDE △
----------------------	------------	------------



CATEGORY	A	B	C	D
RNP 0.30 DA		4019-1½	416 (500-1½)	

AUTHORIZATION REQUIRED

REIL Rwy 13
REIL Rwy 31
HIRL Rwy 4-22 and 13-31