

AMARILLO, TEXAS

HI-VOR/DME or TACAN RWY 4

VORTAC PNH
116.6
 Chan **113**

APCH CRS **037°**

Rwy ldg **13,502**
 TDZE **3607**
 Arpt Elev **3607**

JAL-19 [USAF]

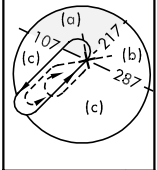
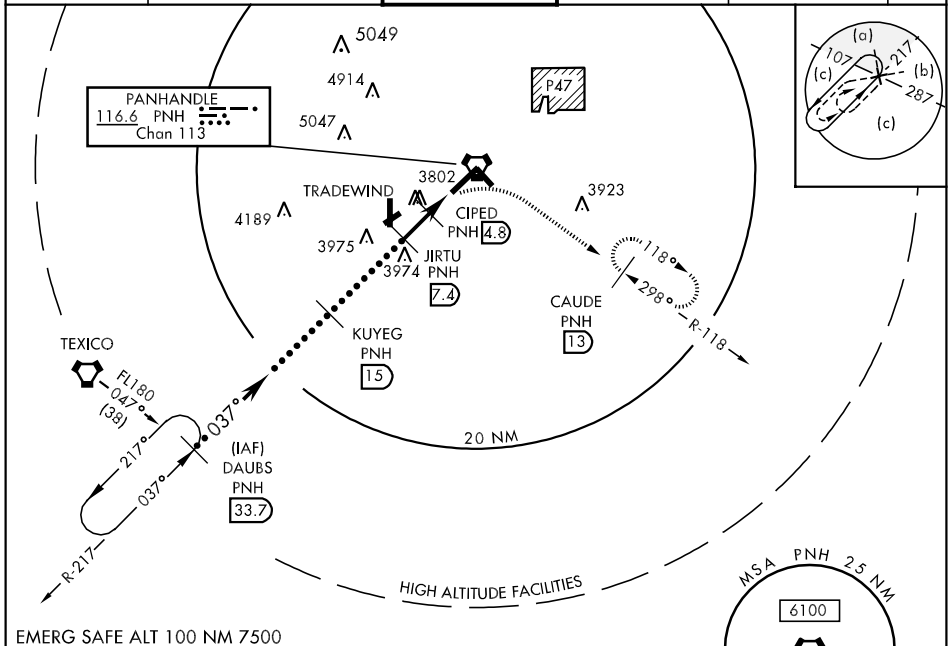
RICK HUSBAND AMARILLO INTL (KAMA)

▼ * For inop ALS, increase CAT D vis to 1½ miles, CAT E vis to 1½ miles.
 ** For inop ALS, increase CAT D vis to 1½ miles, CAT E vis to 2 miles.



MISSED APPROACH: Climbing right turn to 5000 via heading 090° and PNH VORTAC R-118 to CAUDE INT/PNH 13 DME and hold.

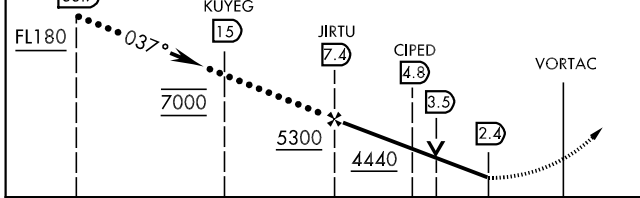
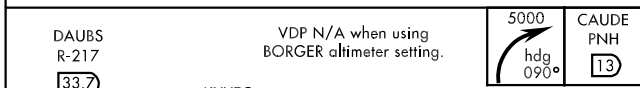
ATIS 118.85 350.3	AMARILLO APP CON 119.5 307.0	AMARILLO TOWER ★ 118.3 0 257.9	GND CON 121.9 348.6	CLNC DEL 121.65	ASR
-----------------------------	----------------------------------------	------------------------------------------	-------------------------------	---------------------------	-----



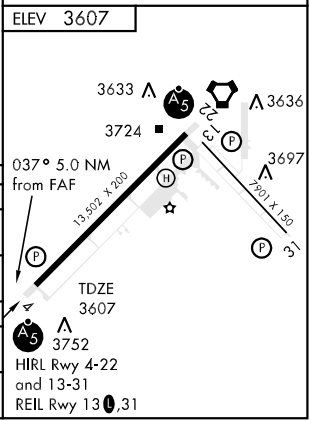
SC-2, 07 FEB 2013 to 07 MAR 2013

SC-2, 07 FEB 2013 to 07 MAR 2013

EMERG SAFE ALT 100 NM 7500



CATEGORY	C	D	E
S-4 *	4020/40 413 (500-¾)	4020/50 413 (500-1)	
CIRCLING	4080-1½ 473 (500-1½)	4240-2 633 (700-2)	4460-3 853 (900-3)
BORGER ALTIMETER SETTING			
S-4 **	4180/50 573 (600-1)	4180/60 573 (600-1¼)	4180-1½ 573 (600-1½)
CIRCLING	4240-1¼ 633 (700-1¼)	4400-2½ 793 (800-2½)	4620-3 1013 (1100-3)



AMARILLO, TEXAS
 Amdt 1 11153

35°13'N-101°42'W

RICK HUSBAND AMARILLO INTL (KAMA)

HI-VOR/DME or TACAN RWY 4