

AMARILLO, TEXAS

HI-VOR/DME or TACAN RWY 22

VORTAC PNH
116.6
Chan 113

APCH CRS
235°

Rwy Idg 13,502
TDZE 3603
Arpt Elev 3607

JAL-19 [USAF]

RICK HUSBAND AMARILLO INTL (KAMA)

MALSRL A5

MISSED APPROACH: Climbing left turn to 5000 via PNH
VOTRAC R-118 to CAUDE INT/PNH 13 DME and hold.

ATIS 118.85 350.3

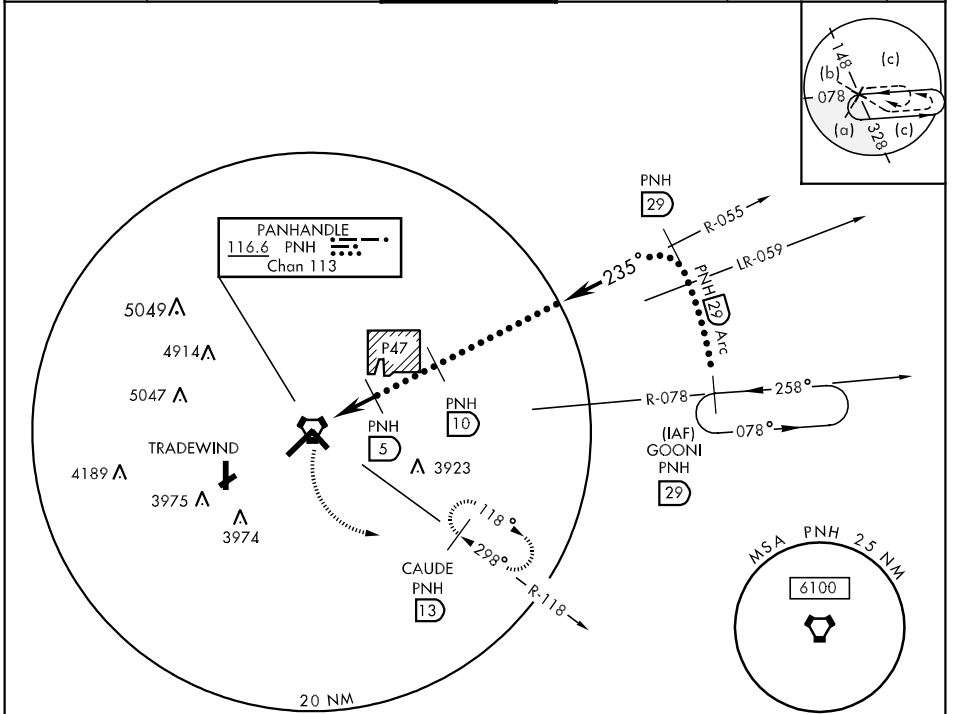
AMARILLO APP CON 119.5 307.0

AMARILLO TOWER ★ 118.3 0 257.9

GND CON 121.9 348.6

CLNC DEL 121.65

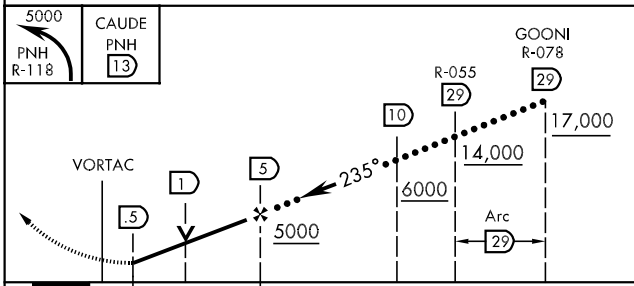
ASR



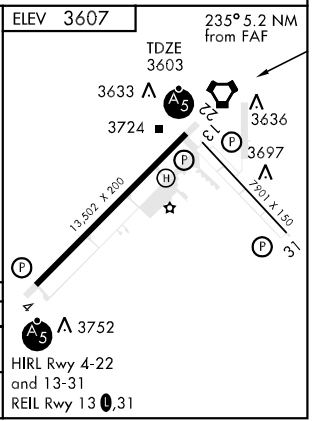
SC-2, 07 FEB 2013 to 07 MAR 2013

SC-2, 07 FEB 2013 to 07 MAR 2013

EMERG SAFE ALT 100 NM 7500



CATEGORY	C	D	E
s-22	3960-1/2 357 (400-1/2)	3960-1 357 (400-1)	
CIRCLING	4080-1 1/2 475 (500-1 1/2)	4240-2 635 (700-2)	4460-3 855 (900-3)



AMARILLO, TEXAS
Orig 11153

35°13'N-101°42'W

RICK HUSBAND AMARILLO INTL (KAMA)

HI-VOR/DME or TACAN RWY 22