

RNAV (GPS) RWY 20

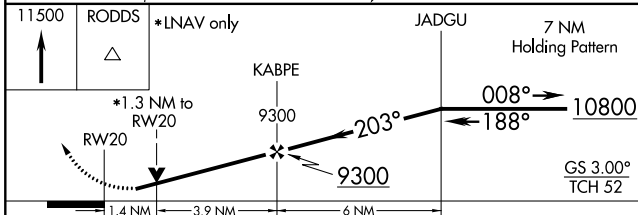
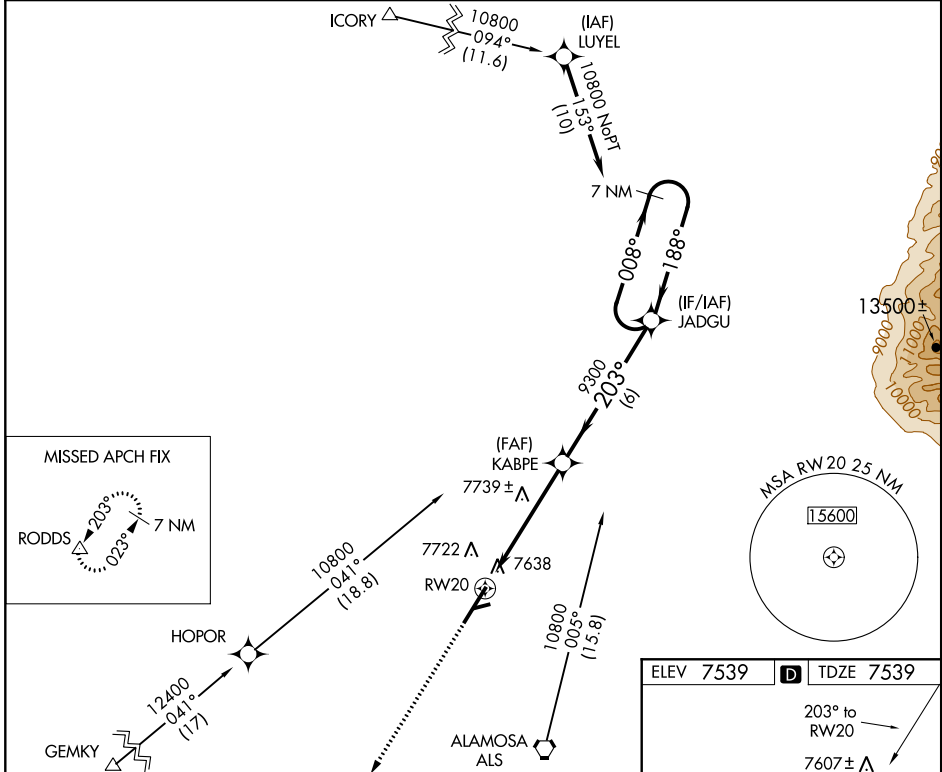
ALAMOSA / SAN LUIS VALLEY RGNL/BERGMAN FIELD (ALS)

WAAS CH 93500 W20A	APP CRS 203°	Rwy Idg 8519 TDZE 7539 Apt Elev 7539
----------------------------------------	------------------------	-----------------------------------------------------------------

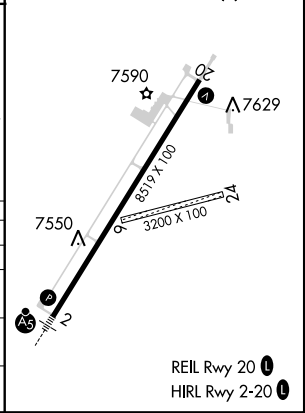
⚠ When local altimeter setting not received, procedure NA. For uncompensated Baro-VNAV systems, LNAV/VNAV NA below -30°C (-22°F) or above 34°C (93°F). DME/DME RNP- 0.3 NA. Visibility reduction by helicopters NA.

⚠ MISSED APPROACH: Climb to 11500 direct RODDS and hold, continue climb-in-hold to 11500.

ASOS 135.175	DENVER CENTER 128.375 379.95	UNICOM 122.8 (CTAF) 1
------------------------	----------------------------------------	---------------------------------



ELEV 7539	D TDZE 7539
203° to RW20	
7607 ± ft	



CATEGORY	A	B	C	D
LPV DA	7867-1 328 (400-1)			
LNAV/VNAV DA	8002-1½ 463 (500-1½)			
LNAV MDA	8000-1 461 (500-1)	8000-1¼ 461 (500-1¼)	8000-1½ 461 (500-1½)	8000-1½ 461 (500-1½)
CIRCLING	8040-1 501 (600-1)	8040-1½ 501 (600-1½)	8100-2 561 (600-2)	8100-2 561 (600-2)

RNAV (GPS) RWY 20

SW-1, 07 FEB 2013 to 07 MAR 2013

SW-1, 07 FEB 2013 to 07 MAR 2013