

ALAMOSA, COLORADO

AL-18 (FAA)

RNAV (GPS) RWY 2

ALAMOSA/SAN LUIS VALLEY RGNL/BERGMAN FIELD (ALS)

WAAS CH 90410 W02A	APP CRS 023°	Rwy Idg TDZE 7539 Apt Elev 7539
--	------------------------	---

⚠ For inoperative MALS/R, increase LNAV/VNAV Cat D visibility to 1 mile. When local altimeter setting not received, procedure NA. For uncompensated Baro-VNAV systems, LNAV/VNAV NA below -30°C (-22°F) or above 34°C (93°F). DME/DME RNP -0.3 NA.

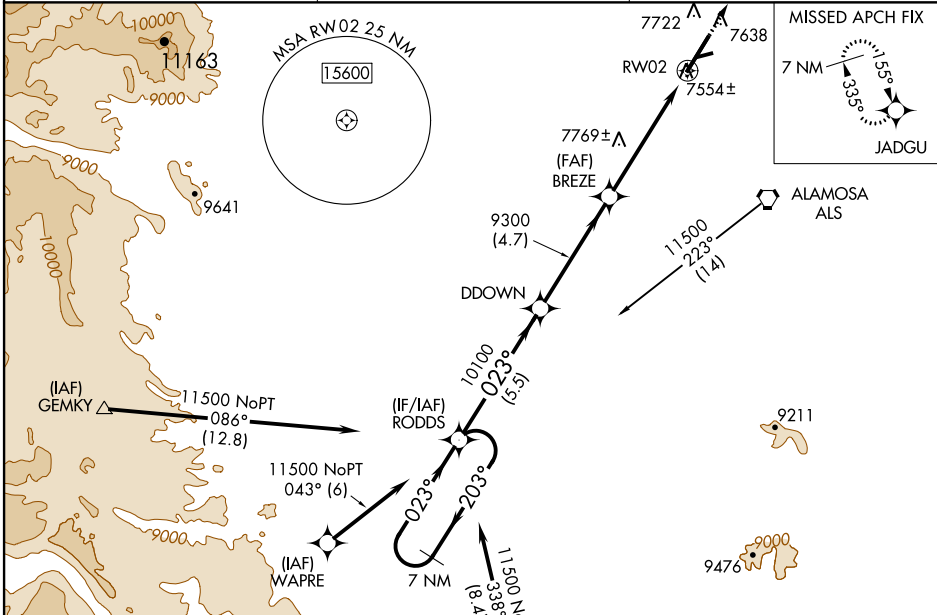


MISSED APPROACH: Climb to 10500 direct JADGU and hold.

ASOS
135.175

DENVER CENTER
128.375 379.95

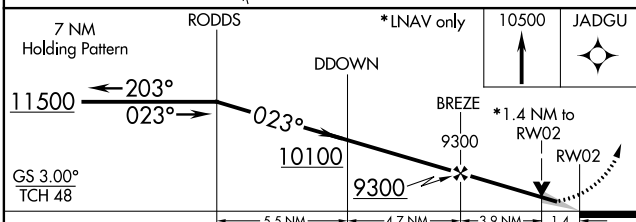
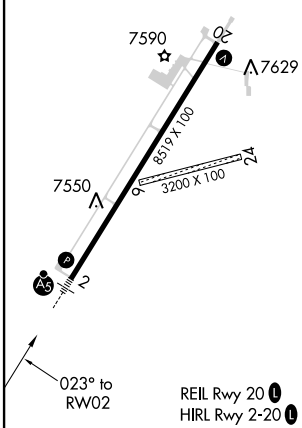
UNICOM
122.8 (CTAF) **📻**



SW-1, 07 FEB 2013 to 07 MAR 2013

SW-1, 07 FEB 2013 to 07 MAR 2013

ELEV 7539	D	TDZE 7539
7607 ± Δ		



CATEGORY	A	B	C	D
LPV DA	7739-½ 200 (300-½)			
LNAV/ DA VNAV	7804-½ 265 (300-½)			7804-¾ 265 (300-¾)
LNAV MDA	8020-½ 481 (500-½)		8020-¾ 481 (500-¾)	8020-1 481 (500-1)
CIRCLING	8040-1 501 (600-1)		8040-1½ 501 (600-1½)	8100-2 561 (600-2)

ALAMOSA, COLORADO
Orig 12152

ALAMOSA/SAN LUIS VALLEY RGNL/BERGMAN FIELD (ALS)
37°26'N-105°52'W

RNAV (GPS) RWY 2