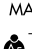


# ILS or LOC RWY 2

ALAMOSA/SAN LUIS VALLEY RGNL/BERGMAN FIELD (ALS)

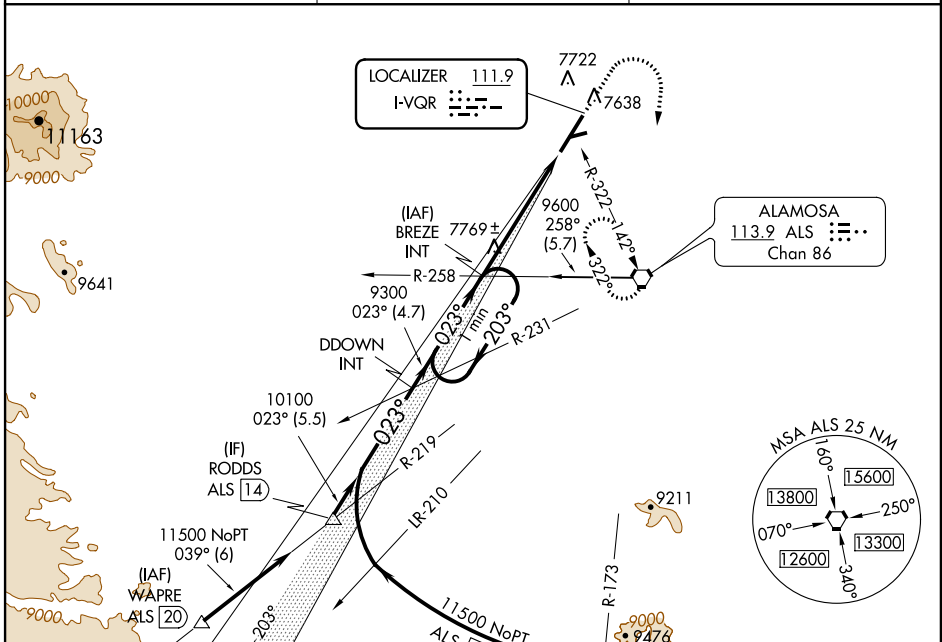
LOC I-VQR <b>111.9</b>	APP CRS <b>023°</b>	Rwy Idg <b>8519</b>
		TDZE <b>7539</b>
		Apt Elev <b>7539</b>

When local altimeter setting not received, procedure NA.

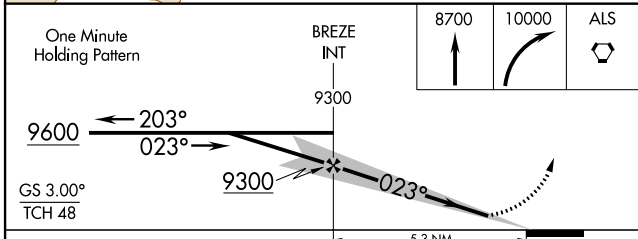
MALSR 

MISSED APPROACH: Climb to 8700, then climbing right turn to 10000 direct ALS VORTAC and hold.

ASOS <b>135.175</b>	DENVER CENTER <b>128.375 379.95</b>	UNICOM <b>122.8 (CTAF)</b>
------------------------	--	-------------------------------



ELEV 7539	TDZE 7539
	7607 ±



CATEGORY	A	B	C	D
S-ILS 2	7739-½ 200 (200-½)			
S-LOC 2	8020-½ 481 (500-½)	8020-¾ 481 (500-¾)	8020-1 481 (500-1)	
CIRCLING	8040-1 501 (600-1)	8040-1½ 501 (600-1½)	8100-2 561 (600-2)	

Knots	60	90	120	150	180
Min:Sec	5:18	3:32	2:39	2:07	1:46

# ILS or LOC RWY 2

SW-1, 07 FEB 2013 to 07 MAR 2013

SW-1, 07 FEB 2013 to 07 MAR 2013