

RNAV (GPS) RWY 33

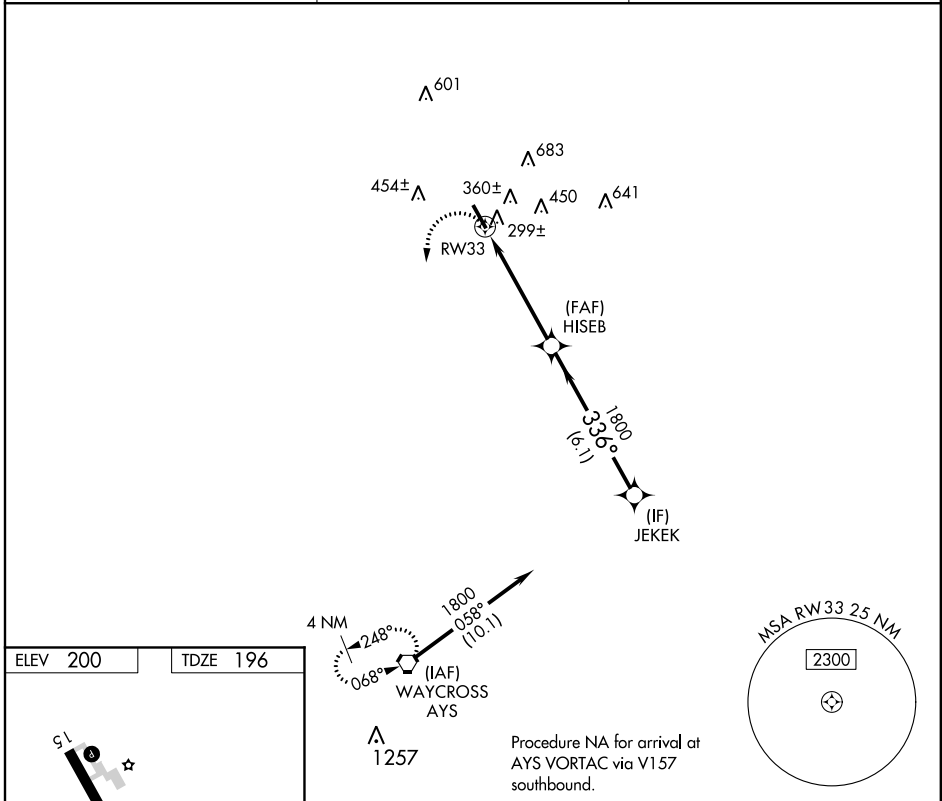
ALMA / BACON COUNTY (A.M.G)

APP CRS 336°	Rwy Idg 5000
	TDZE 196
	Apt Elev 200

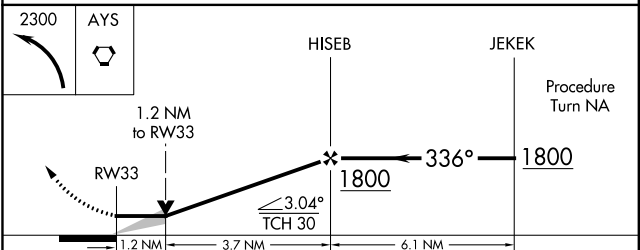
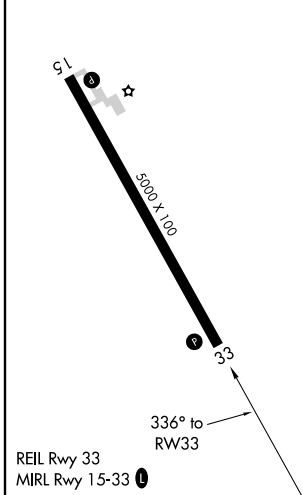
⚠ VDP NA when using Vidalia altimeter setting. DME/DME RNP-0.3 NA.
⚠ If local altimeter setting not received, use Vidalia altimeter setting and increase all MDAs 120 feet.

MISSED APPROACH: Climbing left turn to 2300 direct AYS VORTAC and hold.

ASOS 118.325	JACKSONVILLE CENTER 127.575 269.025	UNICOM 122.7 (CTAF) 0
------------------------	---	---------------------------------



ELEV 200	TDZE 196
----------	----------



CATEGORY	A	B	C	D
LNAV MDA	600-1	404 (400-1)	600-1¼	404 (400-1¼)
CIRCLING	720-1	520 (600-1)	720-1½ 520 (600-1½)	800-2 600 (600-2)