

ALMA, GEORGIA

AL-17 (FAA)

RNAV (GPS) RWY 15

ALMA / BACON COUNTY (AMG)

APP CRS	Rwy Idg	5000
156°	TDZE	200
	Apt Elev	200

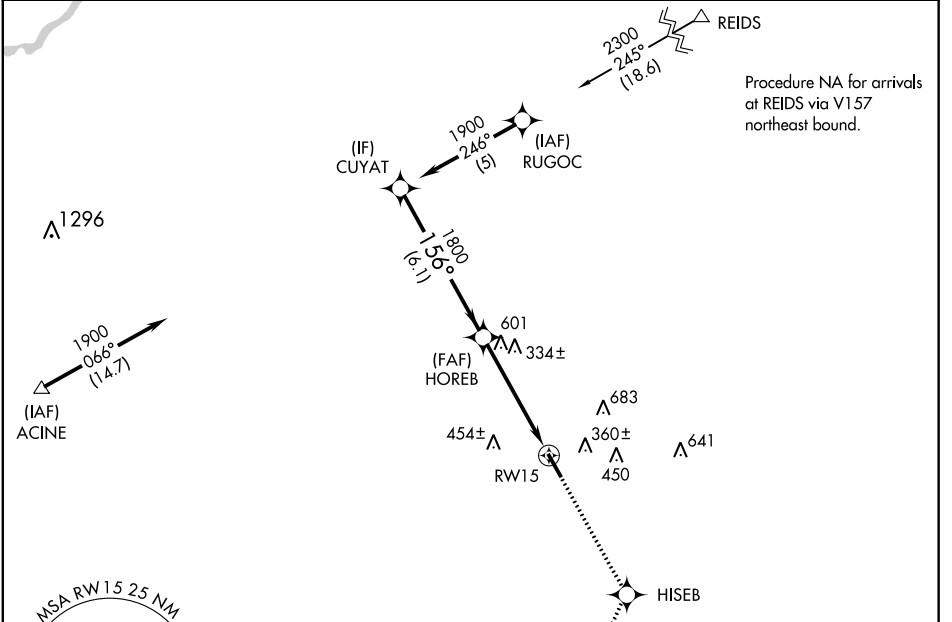
▽ VDP NA when using Vidalia altimeter setting. DME/DME RNP-0.3 NA.
▲ Straight-In minimums NA at night. When local altimeter setting not received, use Vidalia altimeter setting and increase all MDA 120 feet, increase LNAV Cats C and D visibility ½ mile, and Circling Cats C and D visibility ¼ mile.

MISSED APPROACH: Climb to 2300 direct HISEB and via 209° track to AYS VORTAC and hold.

ASOS
118.325

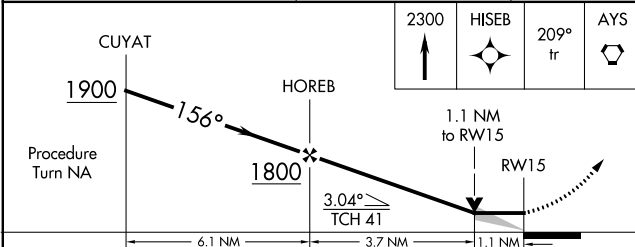
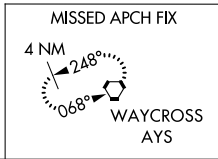
JACKSONVILLE CENTER
127.575 269.025

UNICOM
122.7 (CTAF) 0

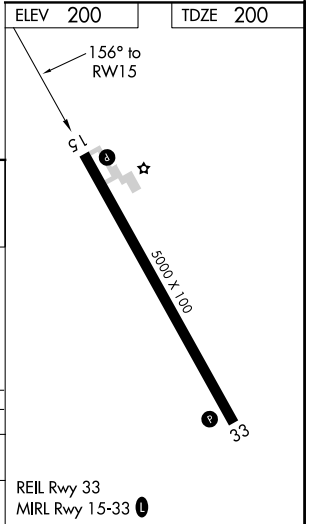


Procedure NA for arrivals at REIDS via V157 northeast bound.

ELEV	200	TDZE	200
------	-----	------	-----



CATEGORY	A	B	C	D
LNAV MDA	600-1 400 (400-1)		600-1½ 400 (400-1½)	
CIRCLING	720-1	520 (600-1)	720-1½ 520 (600-1½)	800-2 600 (600-2)



SE-4, 07 FEB 2013 to 07 MAR 2013

SE-4, 07 FEB 2013 to 07 MAR 2013

ALMA, GEORGIA
Amdt 1 11237

31°32'N-82°30'W

ALMA / BACON COUNTY (AMG)

RNAV (GPS) RWY 15