

# VOR RWY 30

ALLIANCE MUNI (AIA)

VOR/DME AIA <b>111.8</b> Chan <b>55</b>	APP CRS <b>314°</b>	Rwy Idg <b>9202</b> TDZE <b>3927</b> Apt Elev <b>3931</b>
---	------------------------	---

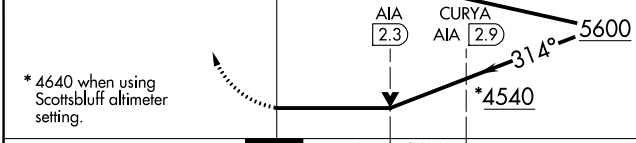
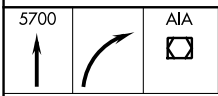
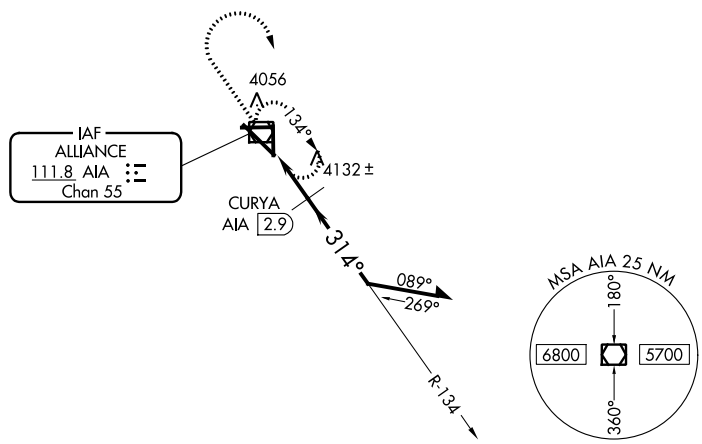
**▲** If local altimeter setting not received, use Scottsbluff altimeter setting and increase all MDAs 100 feet. For inoperative MALS, increase S-30 Cats A and B visibility to 1. For inoperative MALS, increase CURYA fix minimums Cats A and B visibility to 1. VDP NA when using Scottsbluff altimeter setting.

**MALS** MISSED APPROACH: Climb to 5700 then right turn direct AIA VOR/DME and hold.

ASOS <b>135.075</b>	DENVER CENTER <b>127.95 338.2</b>	UNICOM <b>123.0 (CTAF) 0</b>
------------------------	--------------------------------------	---------------------------------

NC-2, 07 FEB 2013 to 07 MAR 2013

NC-2, 07 FEB 2013 to 07 MAR 2013



CATEGORY	A	B	C	D
S-30	4540-3/4	613 (700-3/4)	4540-1 1/4 613 (700-1 1/4)	4540-1 1/2 613 (700-1 1/2)
CIRCLING	4540-1	609 (700-1)	4540-1 3/4 609 (700-1 3/4)	4540-2 609 (700-2)
CURYA FIX MINIMUMS				
S-30	4400-3/4 473 (500-3/4)		4400-1 473 (500-1)	
CIRCLING	4400-1	469 (500-1)	4440-1 1/2 509 (600-1 1/2)	4500-2 569 (600-2)

