

WAAS CH <b>82102</b> <b>W30A</b>	APP CRS <b>303°</b>	Rwy Idg TDZE Apt Elev	<b>9202</b> <b>3927</b> <b>3931</b>
--	------------------------	-----------------------------	---

# RNAV (GPS) RWY 30

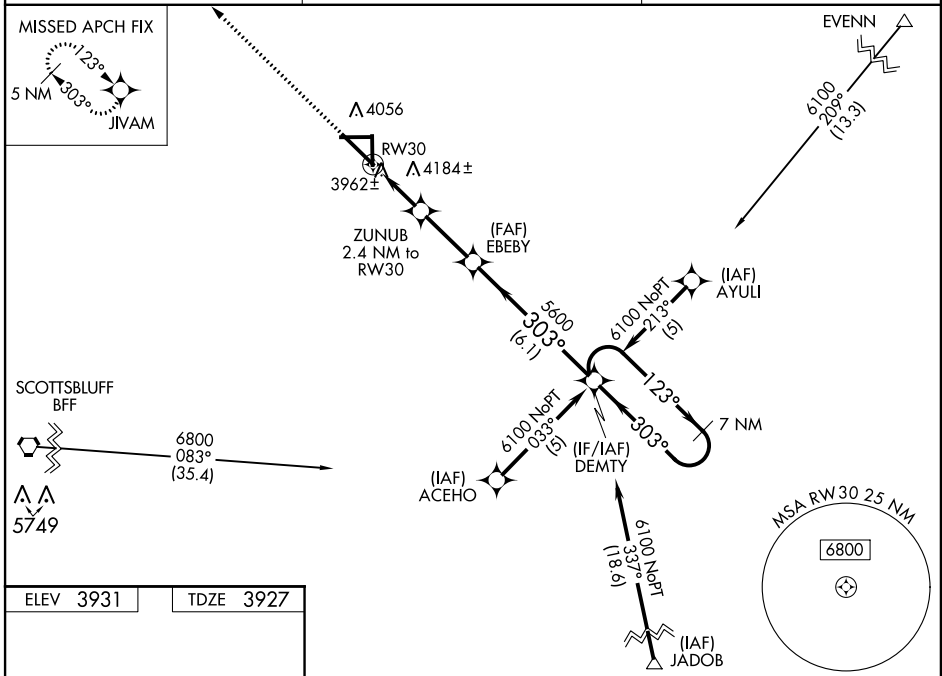
ALLIANCE MUNI (AIA)

**▲** Circling to Rwy 8 NA at night. For inoperative MALSR, increase LNAV/VNAV Cat D visibility to 1 mile. For uncompensated Baro-VNAV systems, LNAV/VNAV NA below -22°C (-7°F) or above 41°C (105°F). DME/DME RNP-0.3 NA. Baro-VNAV and VDP NA when using Scottsbluff altimeter setting. When local altimeter setting not received, use Scottsbluff altimeter setting and increase all DA 91 feet and all MDA 100 feet, increase LNAV/VNAV Cats A, B, C and LNAV Cats C, D visibility ¼ mile, increase Circling Cat C ½ mile and Cat D ¼ mile.

**MALSR**  
**A5**

**MISSED APPROACH:**  
Climb to 5900 direct JIVAM and hold.

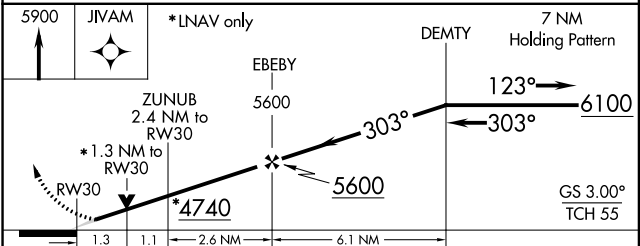
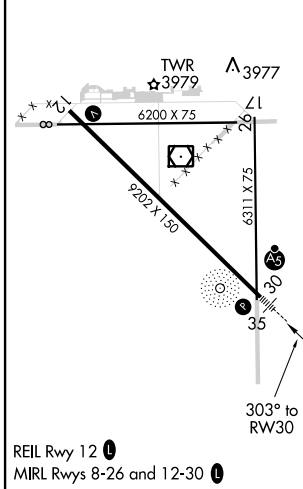
ASOS <b>135.075</b>	DENVER CENTER <b>127.95 338.2</b>	UNICOM <b>123.0 (CTAF) 1</b>
------------------------	--------------------------------------	---------------------------------



NC-2, 07 FEB 2013 to 07 MAR 2013

NC-2, 07 FEB 2013 to 07 MAR 2013

ELEV 3931	TDZE 3927
-----------	-----------



CATEGORY	A	B	C	D
LPV DA	4127-½ 200 (200-½)			
LNAV/VNAV DA	4221-½ 294 (300-½)			4221-¾ 294 (300-¾)
LNAV MDA	4400-½ 473 (500-½)	4400-¾ 473 (500-¾)		4400-1 473 (500-1)
CIRCLING	4400-1 469 (500-1)	4500-1 569 (600-1)	4520-1½ 589 (600-1½)	4520-2 589 (600-2)