

RNAV (GPS) RWY 12

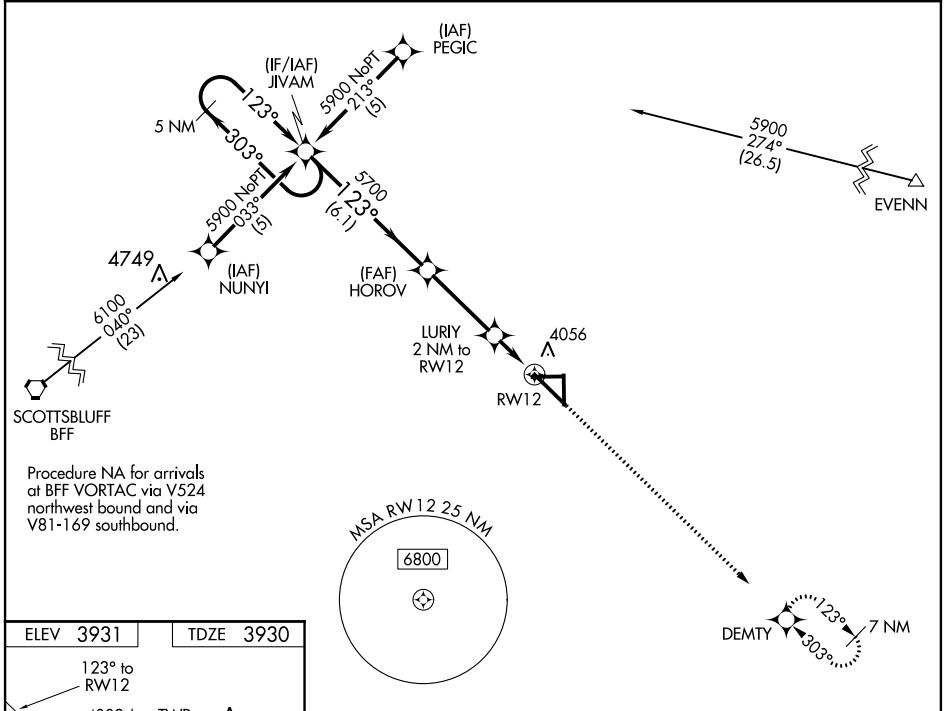
ALLIANCE MUNI (AIA)

WAAS CH 61202 W12A	APP CRS 123°	Rwy Idg 9202 TDZE 3930 Apt Elev 3931
--	------------------------	---

▲ If local altimeter setting not received, use Scottsbluff altimeter setting and increase all MDAs 100 feet. Baro-VNAV NA when using Scottsbluff altimeter setting. For uncompensated Baro-VNAV systems, LNAV/VNAV NA below -22°C (-7°F) or above 41°C (106°F), DME/DME RNP-0.3 NA. VDP NA when using Scottsbluff altimeter setting.

MISSED APPROACH:
Climb to 6100 direct DEMTY and hold.

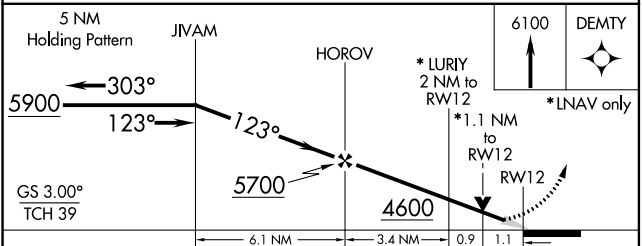
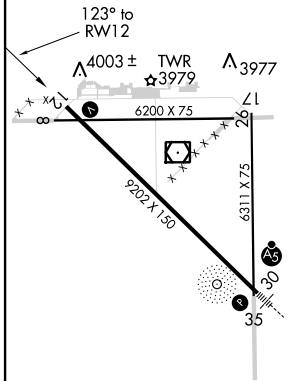
ASOS 135.075	DENVER CENTER 127.95 338.2	UNICOM 123.0 (CTAF) 0
------------------------	--------------------------------------	---------------------------------



NC-2, 07 FEB 2013 to 07 MAR 2013

NC-2, 07 FEB 2013 to 07 MAR 2013

ELEV 3931	TDZE 3930
-----------	-----------



CATEGORY	A	B	C	D
LPV DA		4180-1	250 (300-1)	
LNAV/VNAV DA		4273-1¼	343 (400-1¼)	
LNAV MDA		4320-1	390 (400-1)	4320-1¼ 390 (400-1¼)
CIRCLING	4360-1¼ 429 (500-1¼)	4400-1¼ 469 (500-1¼)	4440-1½ 509 (600-1½)	4500-2 569 (600-2)

REIL Rwy 12 0
MIRL Rwys 8-26 and 12-30 0