

LOC/DME I-BYE 108.35 Chan 20 (Y)	APP CRS 303°	Rwy Idg 9202 TDZE 3927 Apt Elev 3931
---	------------------------	---

ILS or LOC/DME RWY 30

ALLIANCE MUNI (AIA)

NA Circling to Rwy 8 NA at night. For inoperative MALSR when using Scottsbluff altimeter setting increase S-ILS 30 visibility all Cats to 1 mile. When local altimeter setting not received, use Scottsbluff altimeter setting and increase all DA 91 feet and all MDA 100 feet, increase S-LOC 30 Cats C/D visibility ½ mile, Circling Cat C ½ mile and Cat D ¼ mile. VDP NA when using Scottsbluff altimeter setting.

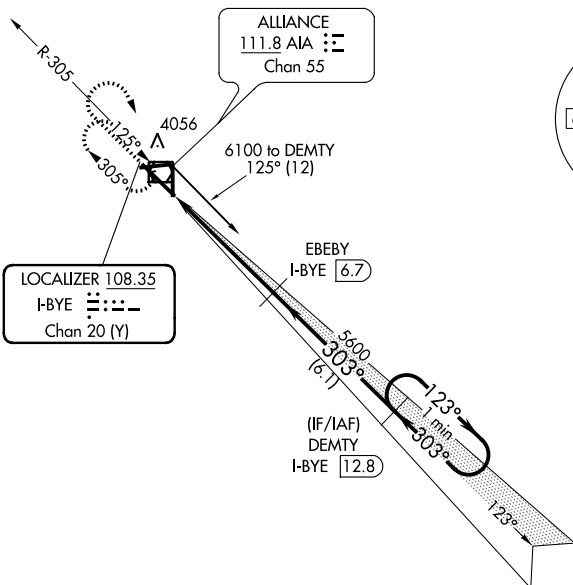


MISSED APPROACH:
Climb to 5700 then right turn direct AIA VOR/DME and hold.

ASOS
135.075

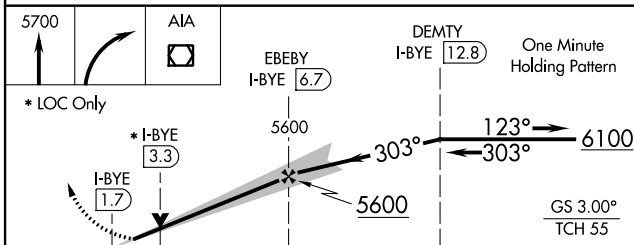
DENVER CENTER
127.95 338.2

UNICOM
123.0 (CTAF)

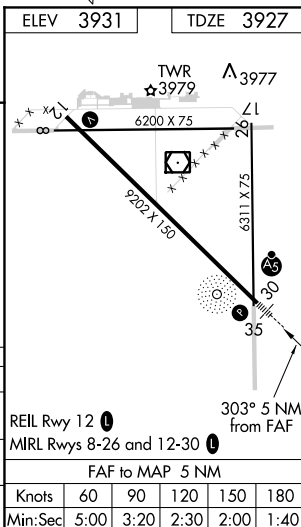


ALTERNATE MISSED APCH FIX
SCOTTSBLUFF
112.6 BFF
Chan 73

5749
▲ ▲
5749



CATEGORY	A	B	C	D
S-ILS 30	4127-½		200 (200-½)	
S-LOC 30	4500-½	573 (600-½)	4500-1 573 (600-1)	4500-1¼ 573 (600-1¼)
CIRCLING	4500-1	569 (600-1)	4520-1½ 589 (600-1½)	4520-2 589 (600-2)



REIL Rwy 12	60	90	120	150	180
MRL Rwys 8-26 and 12-30	5:00	3:20	2:30	2:00	1:40
FAF to MAP 5 NM					

NC-2, 07 FEB 2013 to 07 MAR 2013

NC-2, 07 FEB 2013 to 07 MAR 2013