

TACAN-C

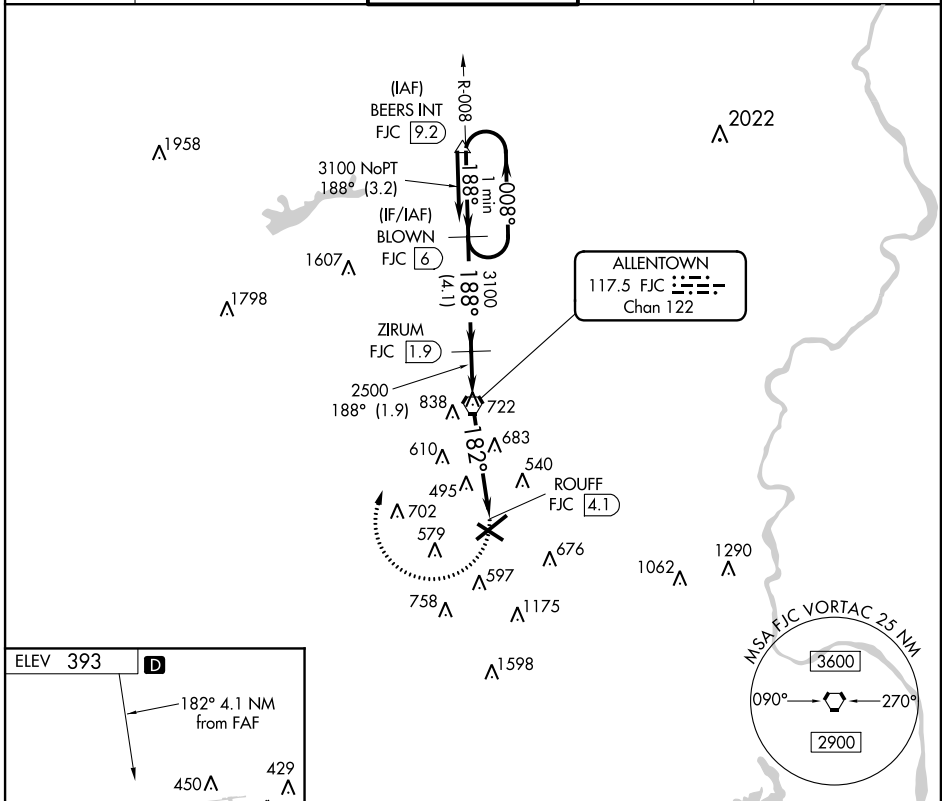
ALLENTOWN / LEHIGH VALLEY INTL (ABE)

VORTAC FJC 117.5 Chan 122	APP CRS 182°	Rwy Idg TDZE Apt Elev	N/A N/A 393
---	------------------------	-----------------------------	--

▽ If local altimeter setting not received, use Quakertown
▲ NA altimeter setting and increase all MDAs 60 feet.

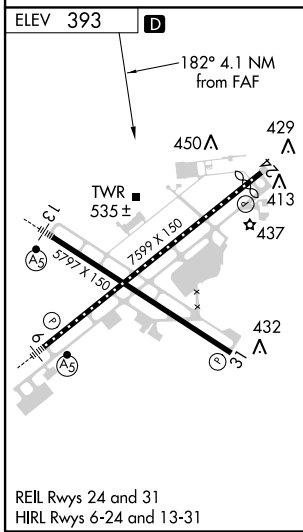
MISSED APPROACH: Climbing right turn to 3100 direct FJC VORTAC then via FJC R-008 to BLOWN/6 DME and hold.

ATIS 126.975	ALLENTOWN APP CON 119.65 124.45 397.9	ALLENTOWN TOWER 120.5 257.95	GND CON 121.9 257.95	CLNC DEL 124.05 257.95
------------------------	---	--	--------------------------------	----------------------------------



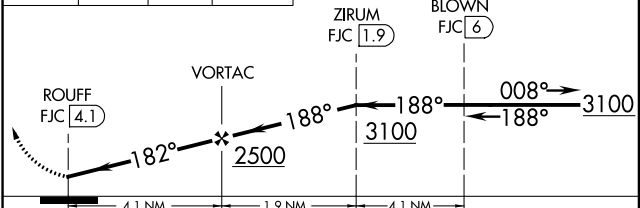
NE-4, 07 FEB 2013 to 07 MAR 2013

NE-4, 07 FEB 2013 to 07 MAR 2013



3100	FJC	FJC	BLOWN
		R-008	FJC (6)

One Minute Holding Pattern



CATEGORY	A	B	C	D
CIRCLING	940-1	547 (600-1)	940-1½ 547 (600-1½)	980-2 587 (600-2)

TACAN-C