

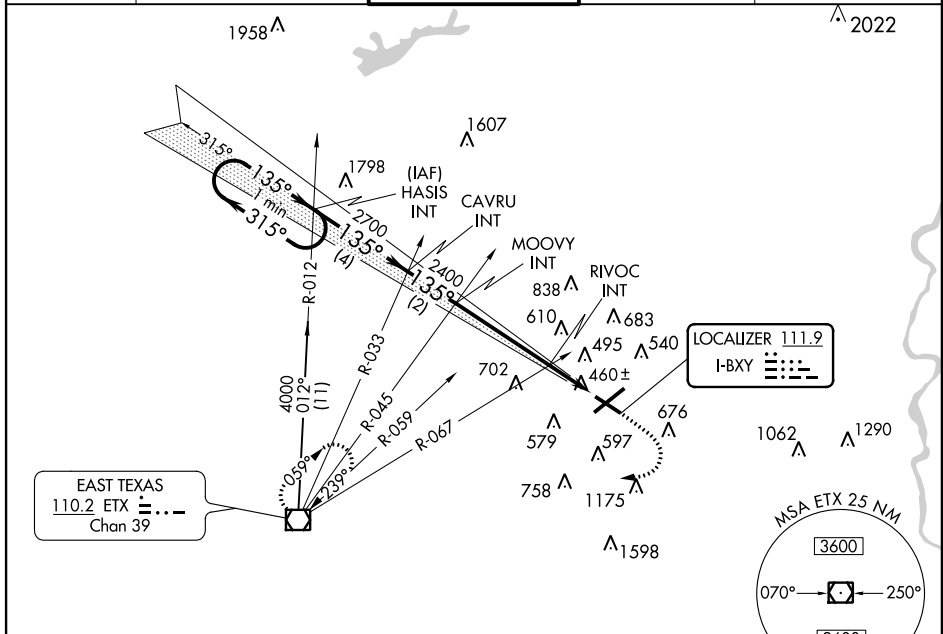
ILS or LOC RWY 13

ALLENTOWN / LEHIGH VALLEY INTL (ABE)

LOC I-BXY 111.9	APP CRS 135°	Rwy Idg TDZE Apt Elev	5797 387 394
---------------------------	------------------------	-----------------------------	---

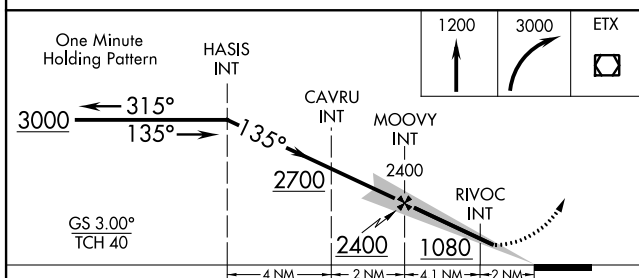
<p>⚠ For inoperative MALSRL increase RIVOC Fix minimums S-LOC 13 Cat D visibility to 1 mile.</p>	<p>MALSRL</p>	<p>MISSED APPROACH: Climb to 1200 then climbing right turn to 3000 direct ETX VOR/DME and hold.</p>
	<p>AS</p>	

ATIS 126.975	ALLENTOWN APP CON 119.65 124.45 397.9	ALLENTOWN TOWER 120.5 257.95	GND CON 121.9 257.95	CLNC DEL 124.05 257.95
------------------------	---	--	--------------------------------	----------------------------------



NE-4, 07 FEB 2013 to 07 MAR 2013

NE-4, 07 FEB 2013 to 07 MAR 2013



CATEGORY	A	B	C	D
S-ILS 13	587-½ 200 (200-½)			
S-LOC 13	1080-½	693 (700-½)	1080-1½ 693 (700-1½)	1080-1¾ 693 (700-1¾)
CIRCLING	1080-1	686 (700-1)	1080-2 686 (700-2)	1080-2¼ 686 (700-2¼)
RIVOC FIX MINIMUMS				
S-LOC 13	720-½ 333 (400-½)		720-¾ 333 (400-¾)	
CIRCLING	840-1 446 (500-1)	860-1 466 (500-1)	880-1½ 486 (500-1½)	980-2 586 (600-2)

ELEV 394	D	TDZE 387
----------	----------	----------

Map showing RWY 13, RWY 31, TWR 535±, and various navigational aids.

REIL Rwy 24 and 31	429
HIRL Rwy 6-24 and 13-31	413
FAF to MAP 6.1 NM	437
	432
	450
	429

Knots	60	90	120	150	180
Min:Sec	6:06	4:04	3:03	2:26	2:02