

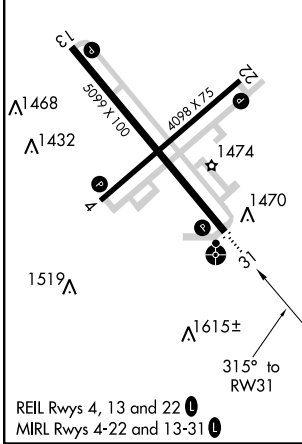
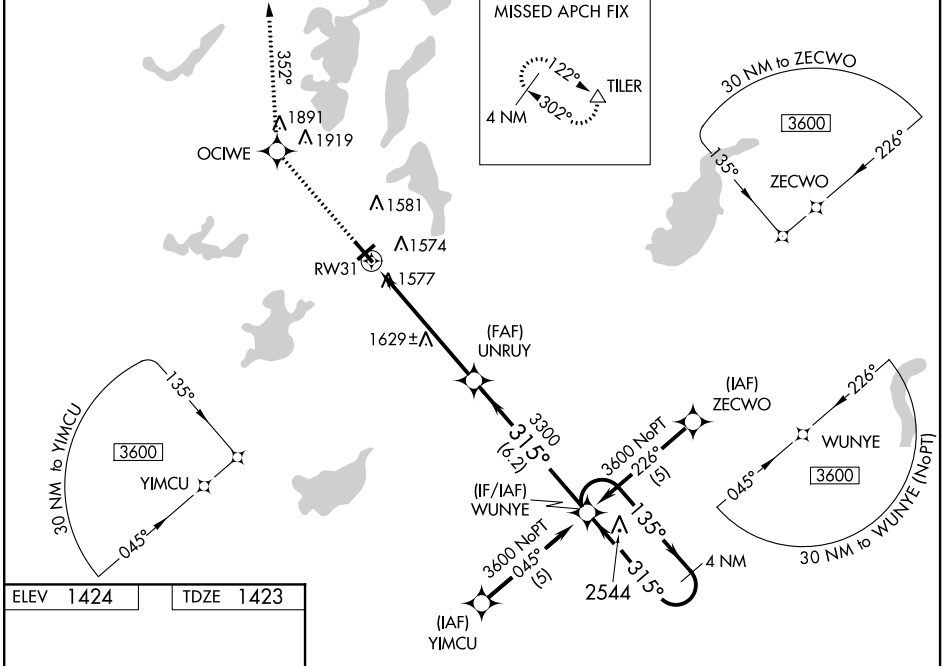
RNAV (GPS) RWY 31
ALEXANDRIA/ CHANDLER FIELD (AXN)

WAAS CH 61007 W31A	APP CRS 315°	Rwy Idg TDZE 1423 Apt Elev 1424	5099
--	------------------------	---	-------------

⚠ Inoperative table does not apply to LPV & LNAV/VNAV Cats A/B/C and LNAV Cat C. For uncompensated Baro-VNAV systems, LNAV/VNAV NA below -17°C (2°F) or above 46°C (114°F). DME/DME RNP -0.3 NA. VDP and Baro-VNAV NA when using Glenwood altimeter setting. When local altimeter setting not received, use Glenwood altimeter setting and increase all DAs/MDAs 40 feet and increase LPV and LNAV/VNAV visibilities ½ mile all Cats.

ODALS
MISSED APPROACH: Climb to 3500 direct OCIWE and via 352° track to TILER and hold.

ASOS 118.375	MINNEAPOLIS CENTER 126.1 269.2	UNICOM 123.0 (CTAF)
------------------------	--	-------------------------------



3500	OCIWE	tr 352°	TILER	WUNYE	4 NM Holding Pattern
*LNAV only		UNRUJ		RWY 31	
1.3 NM		4.4 NM		6.2 NM	
CATEGORY	A	B	C	D	
LPV DA	1815-1¼		392 (400-1¼)		
LNAV/VNAV DA	1885-1½		462 (500-1½)		
LNAV MDA	1880-¾	457 (500-¾)	1880-1¼	1880-1½	
CIRCLING	1920-1	496 (500-1)	1920-1½	1980-2	
			496 (500-1½)	556 (600-2)	

NC-1, 07 FEB 2013 to 07 MAR 2013

NC-1, 07 FEB 2013 to 07 MAR 2013