

WAAS CH 48917 W22A	APP CRS 225°	Rwy Idg TDZE Apt Elev	4099 1424 1425
--	------------------------	-----------------------------	---

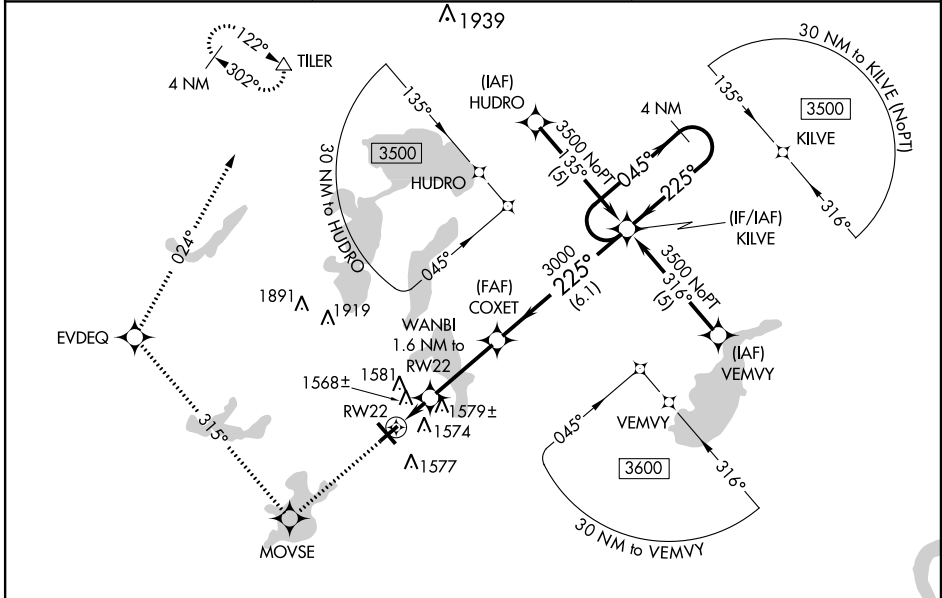
RNAV (GPS) RWY 22

ALEXANDRIA/CHANDLER FIELD (A.X.N)

⚠ Baro-VNAV NA when using Glenwood altimeter setting. For uncompensated Baro-VNAV systems, LNAV/VNAV NA below -17°C (2°F) or above 46°C (114°F).
⚠ DME/DME RNP-0.3 NA. Visibility reduction by helicopters NA. When local altimeter setting not received, use Glenwood altimeter setting and increase all DA 37 feet and all MDA 40 feet, increase LNAV/VNAV all Cats and LNAV Cat D visibility ¼ mile.

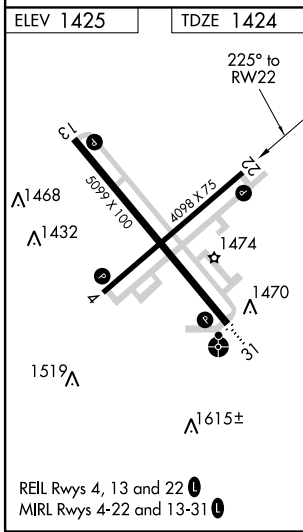
MISSED APPROACH: Climb to 3500 direct MOVSE and right turn on track 315° to EVDEQ and on track 024° to TILER and hold.

ASOS 118.375	MINNEAPOLIS CENTER 126.1 269.2	UNICOM 123.0 (CTAF) 0
------------------------	--	---------------------------------



NC-1, 07 FEB 2013 to 07 MAR 2013

NC-1, 07 FEB 2013 to 07 MAR 2013



3500 MOVSE	EVDEQ	TILER	4 NM Holding Pattern	KILVE
↑	⬤ tr 315°	⬤ tr 024°	△	GS 3.00° TCH 50
*LNAV only		COXET 3000	045° → 3500	← 225°
RW22 1.6 NM to RW22		3000	VGSi and RNAV glidepath not coincident (VGSi Angle 3.00/TCH 44).	
*1980		3000		
1.6 NM		3.2 NM	6.1 NM	
CATEGORY	A	B	C	D
LPV DA	1677-1		253 (300-1)	
LNAV/VNAV DA	1880-1½ 456 (500-1½)			
LNAV MDA	1840-1	416 (500-1)	1840-1¼	416 (500-1¼)
CIRCLING	1920-1	495 (500-1)	1920-1½	1980-2
			495 (500-1½)	555 (600-2)