

RNAV (GPS) RWY 18

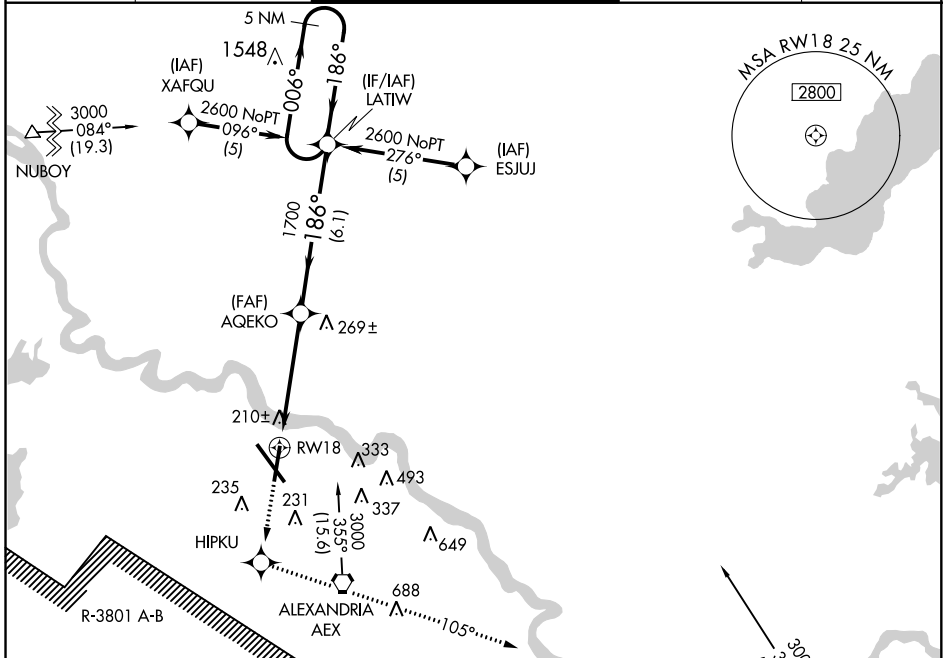
ALEXANDRIA INTL (AEX)

WAAS CH 61200 W18A	APP CRS 186°	Rwy Idg 7001 TDZE 84 Apt Elev 89
--	------------------------	---

▼ DME/DME RNP-0.3 NA. Radar required when R-3801 A-B in use. For uncompensated Baro-VNAV systems, LNAV/VNAV NA below -15°C (5°F) or above 48°C (119°F). Visibility reduction by helicopters NA.

MISSED APPROACH: Climb to 4000 direct HIPKU and via 105° track to MUSHE and hold.

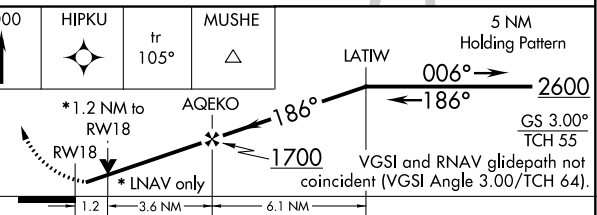
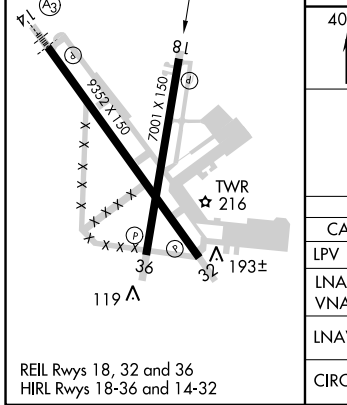
ASOS 123.975	POLK APP CON 125.4 302.2	ALEXANDRIA TOWER 127.35 (CTAF) 269.2	GND CON 121.9 372.0	CLNC DEL 121.9
------------------------	------------------------------------	--	-------------------------------	--------------------------



SC-4, 07 FEB 2013 to 07 MAR 2013

SC-4, 07 FEB 2013 to 07 MAR 2013

ELEV 89	D	TDZE 84
---------	----------	---------



CATEGORY	A	B	C	D
LPV DA	395-1 311 (400-1)			
LNAV/VNAV DA	539-1½ 455 (500-1½)			
LNAV MDA	520-1	436 (500-1)	520-1½ 436 (500-1½)	520-1½ 436 (500-1½)
CIRCLING	540-1½ 451 (500-1½)	560-1½	471 (500-1½)	640-2 551 (600-2)