

ILS or LOC/DME RWY 14

ALEXANDRIA INTL (AEX)

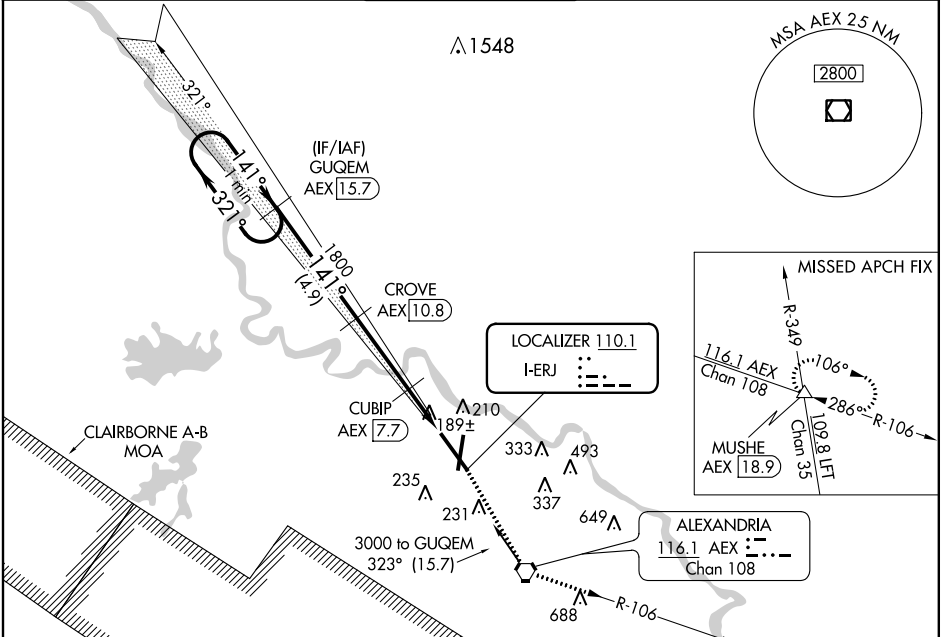
LOC I-ERJ 110.1	APP CRS 141°	Rwy Idg 9352 TDZE 85 Apt Elev 89
---------------------------	------------------------	---

▼ DME from AEX VORTAC. Simultaneous reception of I-ERJ and AEX DME required. When R-3801 B active, Radar and DME required.

SSALR

MISSED APPROACH: Climb to 4000 direct AEX VORTAC and via AEX VORTAC R-106 to MUSHE INT/18.9 DME and hold.

ASOS 123.975	POLK APP CON 125.4 302.2	ALEXANDRIA TOWER 127.35 (CTAF) 269.2	GND CON 121.9 372.0	CLNC DEL 121.9
------------------------	------------------------------------	---	-------------------------------	--------------------------

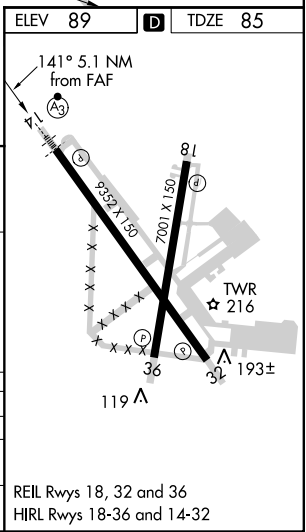


SC-4, 07 FEB 2013 to 07 MAR 2013

SC-4, 07 FEB 2013 to 07 MAR 2013

DME REQUIRED

One Minute Holding Pattern	GUQEM AEX 15.7	4000	AEX	AEX R-106	MUSHE
3000 ← 321°	→ 141°	1800	CROVE AEX 10.8	CUBIP AEX 7.7	AEX 5.7
GS 3.00° TCH 56					*LOC only
VGSI and ILS glidepath not coincident (VGSI Angle 3.00/TCH 70).					
	4.9 NM	3.1 NM	2 NM		
CATEGORY	A	B	C	D	
S-ILS 14	285/24		200 (200-½)		
S-LOC 14	460/24		375 (400-½)		460/40 375 (400-¾)
CIRCLING	540-1 451 (500-1)	560-1 471 (500-1)	560-1½ 471 (500-1½)	640-2 551 (600-2)	



REIL Rwy 18, 32 and 36
HIRL Rwy 18-36 and 14-32