


# VOR or TACAN RWY 8

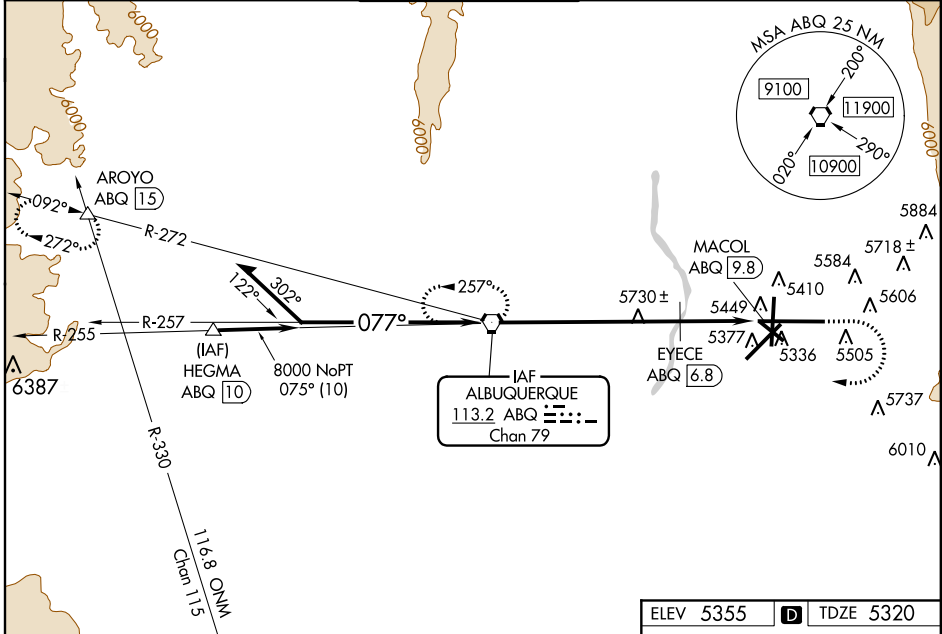
ALBUQUERQUE INTL SUNPORT (ABQ)

VORTAC ABQ <b>113.2</b> Chan 79	APP CRS <b>077°</b>	Rwy Idg <b>12793</b> TDZE <b>5320</b> Apt Elev <b>5355</b>
---------------------------------------	------------------------	--

**⚠** For inoperative MALS, increase S-8 Cat A visibility to RVR 5000, and Cat E visibility to 3 miles.  
**⚠** Circling NA for Cat E east of Rwy 17/35.  
**⚠** EYECE FIX MINIMUMS: For inoperative MALS, increase S-8 Cat D visibility to RVR 6000, and Cat E visibility to 3 miles.

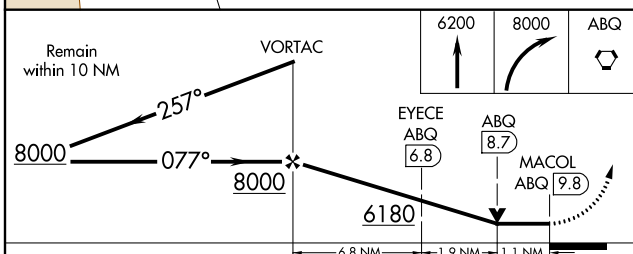
**MALS**  
  
**MISSED APPROACH:** Climb to 6200 then climbing right turn to 8000 direct ALBUQUERQUE VORTAC and hold (TACAN aircraft continue via ABQ R-272 to AROYO INT/ABQ 15 DME and hold W, RT, 092 inbound).

ATIS <b>118.0 257.7</b>	ALBUQUERQUE APP CON <b>123.9 354.1</b>	ALBUQUERQUE TOWER <b>120.3 351.9</b>	GND CON <b>121.9 348.6</b>	CLNC DEL <b>119.2 259.3</b>
----------------------------	---	---	-------------------------------	--------------------------------



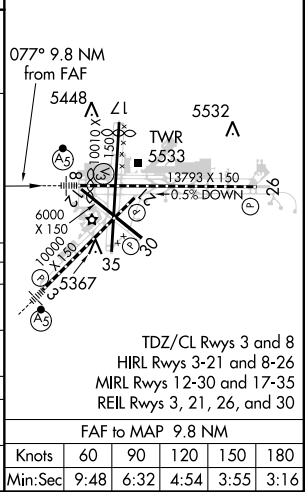
SW-1, 07 FEB 2013 to 07 MAR 2013

SW-1, 07 FEB 2013 to 07 MAR 2013



ELEV 5355	<b>D</b> TDZE 5320
-----------	--------------------

CATEGORY	A	B	C	D	E
S-8	6180/40	860 (900-3/4)	6180-2 860 (900-2)	6180-2 1/4 860 (900-2 1/4)	6180-2 1/2 860 (900-2 1/2)
CIRCLING	6180-1 825 (900-1)	6180-1 1/4 825 (900-1 1/4)	6180-2 1/2 825 (900-2 1/2)	6180-2 3/4 825 (900-2 3/4)	6180-3 825 (900-3)
EYECE FIX MINIMUMS					
S-8	5700/24 380 (400-1/2)		5700/50 380 (400-1)	6180-2 1/2 860 (900-2 1/2)	
CIRCLING	5840-1	485 (500-1)	5900-1 1/2 545 (600-1 1/2)	5920-2 565 (600-2)	6180-3 825 (900-3)



TDZ/CL Rwy 3 and 8  
 HIRL Rwy 3-21 and 8-26  
 MIRL Rwy 12-30 and 17-35  
 REIL Rwy 3, 21, 26, and 30

FAF to MAP 9.8 NM

Knots	60	90	120	150	180
Min:Sec	9:48	6:32	4:54	3:55	3:16