

APP CRS 079°	Rwy Idg 12793
	THRE 5315
	Apt Elev 5355

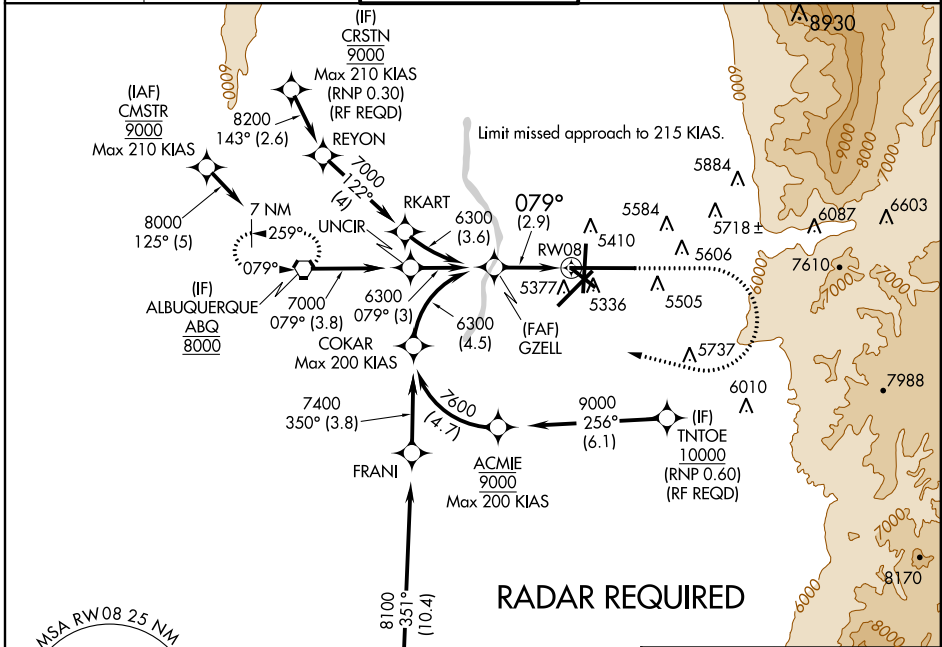
RNAV (RNP) Z RWY 8

ALBUQUERQUE INTL SUNPORT (ABQ)

ASR For uncompensated Baro-VNAV systems, procedure NA below -12°C (11°F) or above 47°C (117°F). For inoperative MALSR, increase RNP 0.30 all Cats visibility to RVR 4500. GPS Required.

MALSR MISSED APPROACH: Climb to 5900 then climbing right turn to 8000 direct ABQ VORTAC and hold.

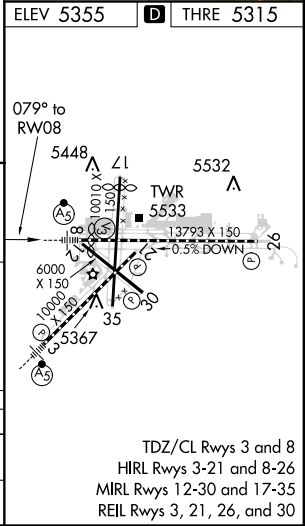
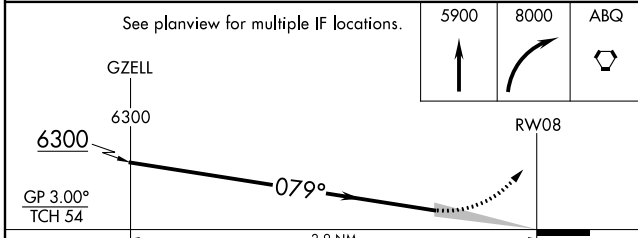
ATIS 118.0 257.7	ALBUQUERQUE APP CON 123.9 354.1	ALBUQUERQUE TOWER 120.3 351.9	GND CON 121.9 348.6	CLNC DEL 119.2 259.3
----------------------------	---	---	-------------------------------	--------------------------------



SW-1, 07 FEB 2013 to 07 MAR 2013

SW-1, 07 FEB 2013 to 07 MAR 2013

ELEV 5355	THRE 5315
-----------	-----------



CATEGORY	A	B	C	D
RNP 0.30 DA	5614/24 299 (300-1/2)			
AUTHORIZATION REQUIRED				