

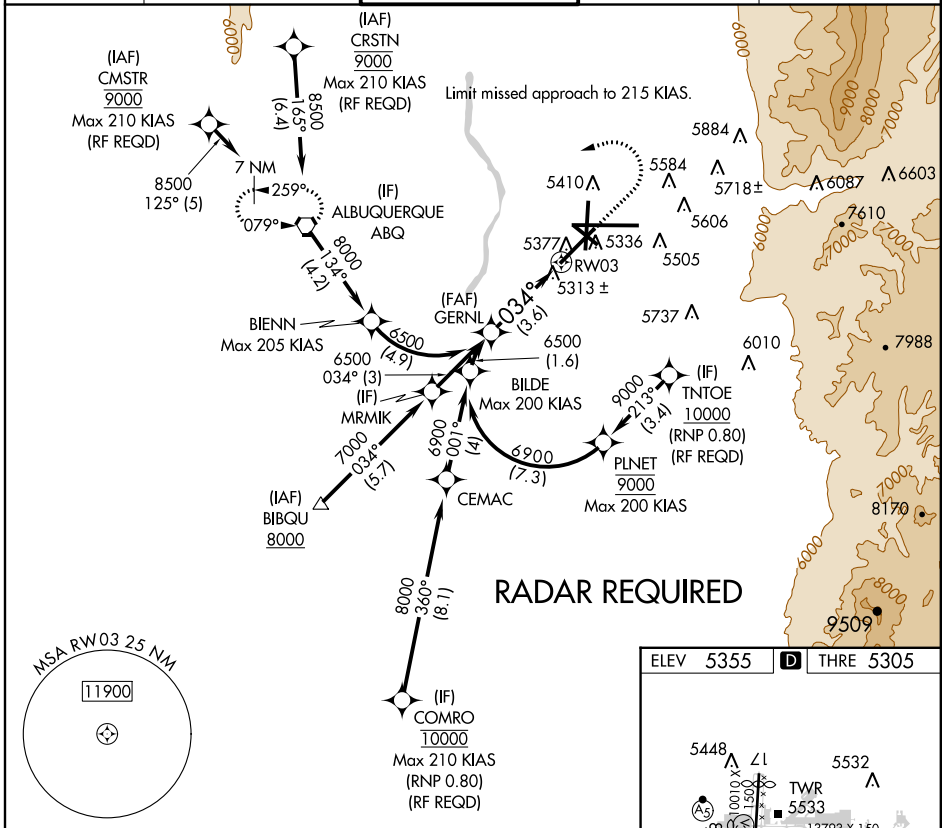
APP CRS 034°	Rwy Idg 10000
	THRE 5305
	Apt Elev 5355

RNAV (RNP) Z RWY 3

ALBUQUERQUE INTL SUNPORT (ABQ)

ASR	For uncompensated Baro-VNAV systems, procedure NA below -12°C (11°F) or above 45°C (114°F). For inoperative MALSR, increase RNP 0.30 all Cats visibility to RVR 4500. GPS required.	MALSR	MISSED APPROACH: Climb to 6200 then climbing left turn to 8000 direct ABQ VORTAC and hold.
-----	---	-------	--

ATIS 118.0 257.7	ALBUQUERQUE APP CON 123.9 354.1	ALBUQUERQUE TOWER 120.3 351.9	GND CON 121.9 348.6	CLNC DEL 119.2 259.3
----------------------------	---	---	-------------------------------	--------------------------------



SW-1, 07 FEB 2013 to 07 MAR 2013

SW-1, 07 FEB 2013 to 07 MAR 2013

ELEV 5355	D THRE 5305
-----------	--------------------

TDZ/CL Rws 3 and 8
HIRL Rws 3-21 and 8-26
MIRL Rws 12-30 and 17-35
REIL Rws 3, 21, 26, and 30

See planview for multiple IF locations.

GERNL	6200	8000	ABQ
-------	------	------	-----

CATEGORY	A	B	C	D
RNP 0.3 DA	5604/40		299 (300-¾)	

AUTHORIZATION REQUIRED