

APP CRS 259°	Rwy Idg 13793
	THRE 5355
	Apt Elev 5355

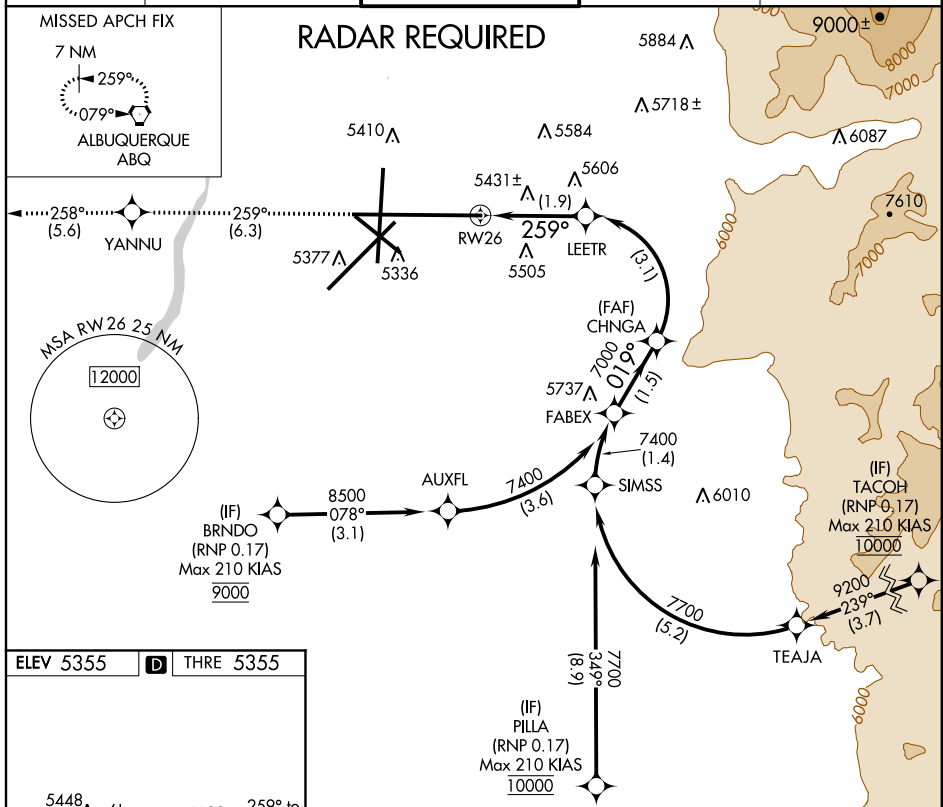
RNAV (RNP) Z RWY 26

ALBUQUERQUE INTL SUNPORT (ABQ)

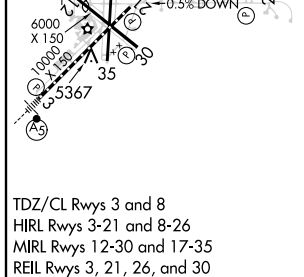
▼ For uncompensated Baro-VNAV systems, procedure NA below -12°C (11°F) or above 48°C (119°F). When VGSi inop, procedure NA at night. RF Required. GPS Required.

MISSED APPROACH: Climb to 8000 on track 259° to YANNU then on track 258° to ABQ VORTAC and hold.

ATIS 118.0 257.7	ALBUQUERQUE APP CON 123.9 354.1	ALBUQUERQUE TOWER 120.3 351.9	GND CON 121.9 348.6	CLNC DEL 119.2 259.3
----------------------------	---	---	-------------------------------	--------------------------------



ELEV 5355	D	THRE 5355
-----------	----------	-----------



8000	YANNU	tr 259°	ABQ	tr 258°	VGSi and RNAV glidepath not coincident (VGSi Angle 3.00/TCH 83).	FABEX
See planview for multiple IF locations.	LEETR	7000	CHNGA	7400	7000	7400
	RW26	259°	6007	019°	7000	GP 3.00° TCH 50
		1.9 NM		3.1 NM		1.5 NM
CATEGORY	A	B	C	D		
RNP 0.17 DA	5736-1¼		381 (400-1¼)			

TDZ/CL Rwy 3 and 8
HIRL Rwy 3-21 and 8-26
MIRL Rwy 12-30 and 17-35
REIL Rwy 3, 21, 26, and 30

ALBUQUERQUE, NEW MEXICO
Orig 10JAN13

ALBUQUERQUE INTL SUNPORT (ABQ)
35°02'N-106°37'W
RNAV (RNP) Z RWY 26

SW-1, 07 FEB 2013 to 07 MAR 2013

SW-1, 07 FEB 2013 to 07 MAR 2013