

APP CRS	Rwy Idg	10000
214°	THRE	5316
	Apt Elev	5355

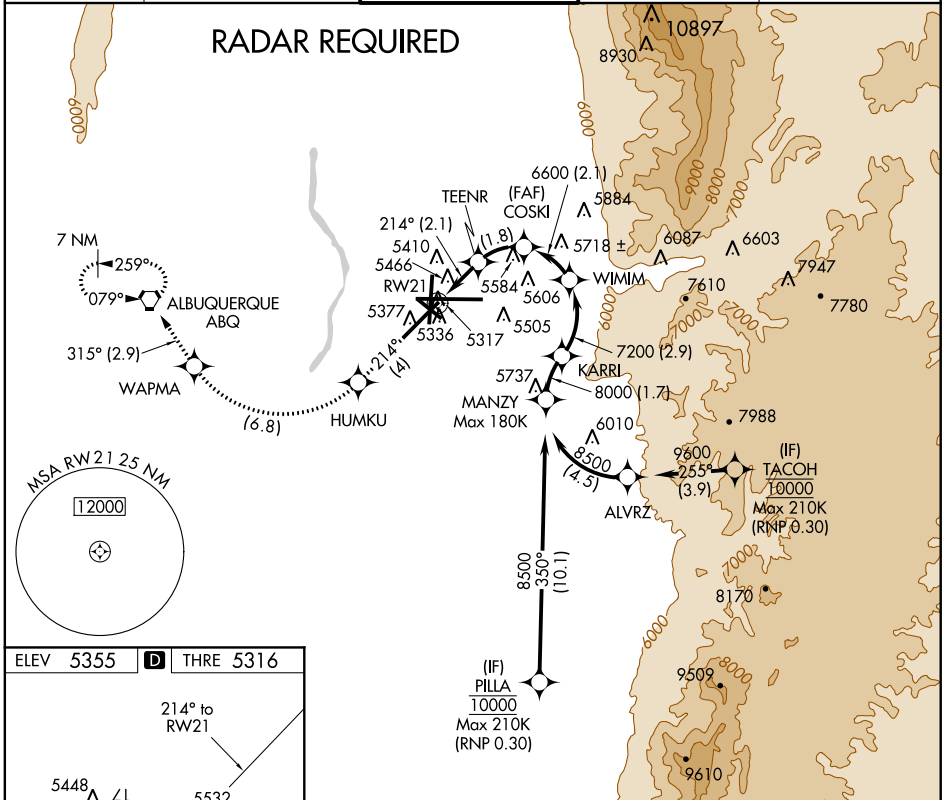
RNAV (RNP) Z RWY 21

ALBUQUERQUE INTL SUNPORT (ABQ)

For uncompensated Baro-VNAV systems, procedure NA below -12°C (11°F) or above 47°C (116°F). RF required. GPS required.

MISSED APPROACH: Climb to 8000 on track 214° to HUMKU, right turn to WAPMA, then on track 315° to ABQ VORTAC and hold.

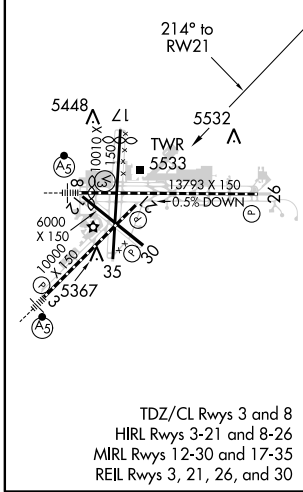
ATIS	ALBUQUERQUE APP CON	ALBUQUERQUE TOWER	GND CON	CLNC DEL
118.0 257.7	123.9 354.1	120.3 351.9	121.9 348.6	119.2 259.3



SW-1, 07 FEB 2013 to 07 MAR 2013

SW-1, 07 FEB 2013 to 07 MAR 2013

ELEV 5355	D	THRE 5316
-----------	----------	-----------



8000	HUMKU	WAPMA	ABQ	MANZY
↑	✧	↷	✧	✧
tr 214°			tr 315°	
VGSi and RNAV glidepath not coincident.				
	TEENR 6030	COSKI 6600	WIMM 7200	KARRI 8000
		6600		8500
	See planview for multiple IF locations.			GP 3.00° TCH 55
	2.1 NM	1.8 NM	2.1 NM	2.9 NM
CATEGORY	A	B	C	D
RNP 0.30 DA	5758-1½		442 (500-1½)	

AUTHORIZATION REQUIRED