

APP CRS	Rwy Idg	13793
259°	THRE	5355
	Apt Elev	5355

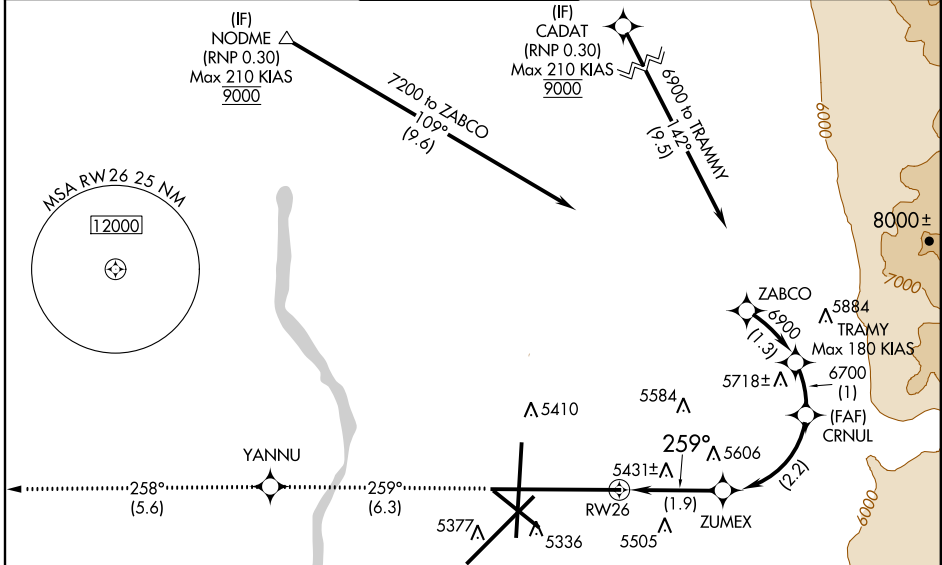
RNAV (RNP) Y RWY 26

ALBUQUERQUE INTL SUNPORT (ABQ)

▼ For uncompensated Baro-VNAV systems, procedure NA below -12°C (11°F) or above 48°C (119°F). When VGSI inop, procedure NA at night. RF required.

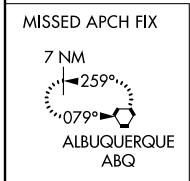
MISSED APPROACH: Climb to 8000 on track 259° to YANNU then on track 258° to ABQ VORTAC and hold.

ATIS	ALBUQUERQUE APP CON	ALBUQUERQUE TOWER	GND CON	CLNC DEL
118.0 257.7	123.9 354.1	120.3 351.9	121.9 348.6	119.2 259.3

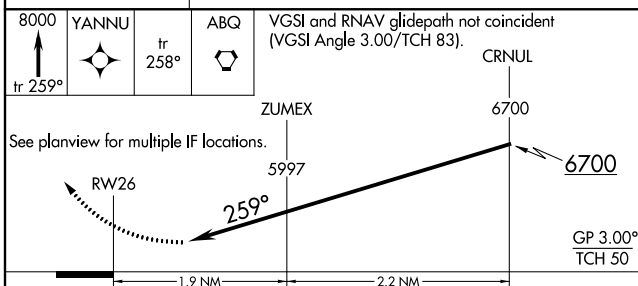


SW-1, 07 FEB 2013 to 07 MAR 2013

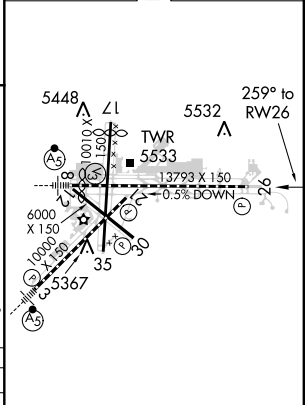
SW-1, 07 FEB 2013 to 07 MAR 2013



RADAR REQUIRED



ELEV	5355	D	THRE	5355
------	------	---	------	------



8000	YANNU	tr 258°	ABQ	VGSI and RNAV glidepath not coincident (VGSI Angle 3.00/TCH 83).	CRNUL
tr 259°					
See planview for multiple IF locations.					
ZUMEX 5997					
RWY 26 6700					
GP 3.00° TCH 50					
1.9 NM 2.2 NM					
CATEGORY	A	B	C	D	
RNP 0.15 DA	5727-1¼ 372 (400-1¼)				

AUTHORIZATION REQUIRED

TDZ/CL Rwy 3 and 8
HIRL Rwy 3-21 and 8-26
MIRL Rwy 12-30 and 17-35
REIL Rwy 3, 21, 26, and 30