

APP CRS <b>214°</b>	Rwy Idg <b>THRE</b>	<b>10000</b>
	THRE	<b>5316</b>
	Apt Elev	<b>5355</b>

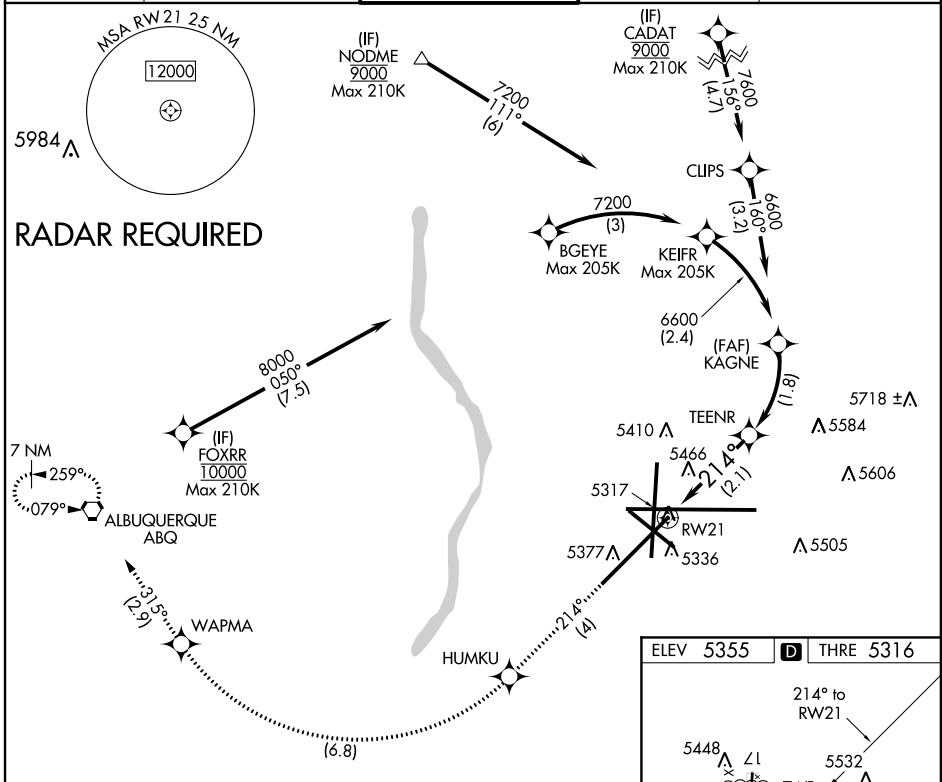
# RNAV (RNP) Y RWY 21

ALBUQUERQUE INTL SUNPORT (ABQ)

**▽** For uncompensated Baro-VNAV systems, procedure NA below -12°C (11°F) or above 47°C (116°F). RF Required. GPS Required.

MISSED APPROACH: Climb to 8000 on track 214° to HUMKU, right turn to WAPMA, then on track 315° to ABQ VORTAC and hold.

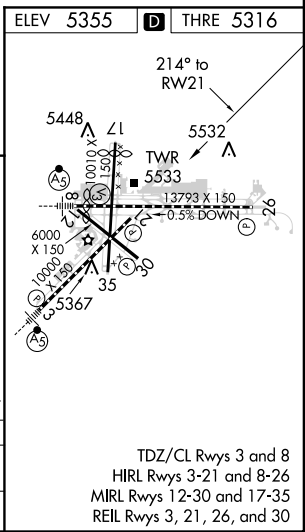
ATIS <b>118.0 257.7</b>	ALBUQUERQUE APP CON <b>123.9 354.1</b>	ALBUQUERQUE TOWER <b>120.3 351.9</b>	GND CON <b>121.9 348.6</b>	CLNC DEL <b>119.2 259.3</b>
----------------------------	---	---	-------------------------------	--------------------------------



SW-1, 07 FEB 2013 to 07 MAR 2013

SW-1, 07 FEB 2013 to 07 MAR 2013

8000	HUMKU	WAPMA	tr 315°	ABQ	KAGNE
tr 214°					6600
See planview for multiple IF locations.		TEENR	VGSi and RNAV glidepath not coincident.		GP 3.00° TCH 55
RW21		2.1 NM		1.8 NM	



CATEGORY	A	B	C	D
RNP 0.30 DA	5758-1½		442 (500-1½)	

## AUTHORIZATION REQUIRED