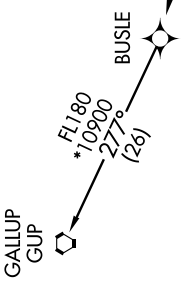


SW-1, 07 FEB 2013 to 07 MAR 2013

ATIS 118.0 257.7  
CINC DEL 119.2 259.3  
GND CON 121.9 348.6  
ALBUQUERQUE DEP CON 127.4 253.5  
ALBUQUERQUE TOWER 120.3 351.9

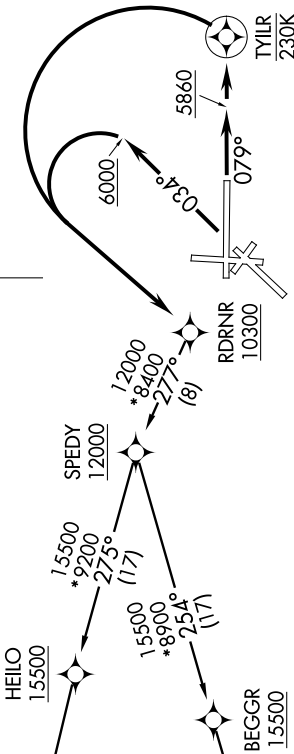
TAKEOFF MINIMUMS

Rwy 3: Standard with minimum climb of 500' per NM to 10600.  
Rwy 8: Standard with minimum climb of 500' per NM to 10000.



TAKEOFF OBSTACLE NOTES

Rwy 3: Tank 496' from DER, 1708' left of centerline, 150' AGL/5466' MSL. Water tower 4984' from DER, 1713' left of centerline, 156' AGL/5486' MSL.



DEPARTURE ROUTE DESCRIPTION

TAKEOFF RUNWAY 3: Climb heading 034° to 6000, then climbing left turn direct RDRNR, cross RDRNR at or above 10300. Thence . . .  
TAKEOFF RUNWAY 8: Climb heading 079° to 5860, and direct TYILR, then climbing left turn direct RDRNR, cross RDRNR at or above 10300. Thence . . .

. . . on assigned transition. Maintain FL200, expect filed altitude ten minutes after departure.

GALLUP TRANSITION (RDRNR1.GUP)  
ZUNI TRANSITION (RDRNR1.ZUN)

NOTE: Rwy 8: Do not exceed 230 KIAS until passing TYILR.

NOTE: DME/DME/IRU or GPS required.

NOTE: For Turbopjet aircraft only.

NOTE: RNAV 1.

NOTE: RADAR required.

NOTE: If unable to accept climb gradient, advise ATC on initial contact.

NOTE: For non-GPS equipped aircraft, ABQ and ONMI DME's must be operational.

NOTE: Chart not to scale.

SW-1, 07 FEB 2013 to 07 MAR 2013