

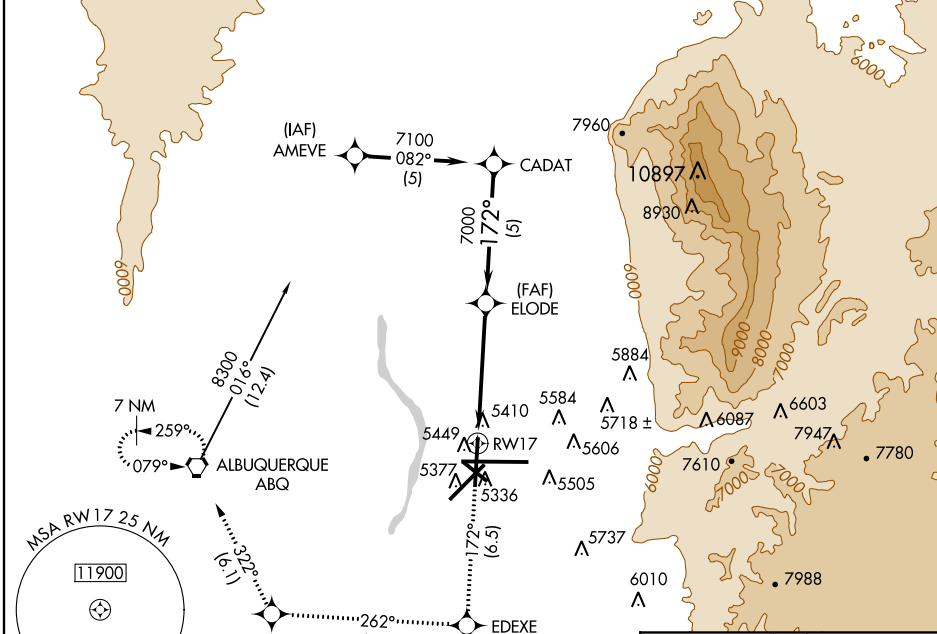
RNAV (GPS) RWY 17

ALBUQUERQUE INTL SUNPORT (ABQ)

APP CRS 172°	Rwy Idg 9110
	TDZE 5321
	Apt Elev 5355

NA Baro-VNAV NA below -25° C (-13° F)
 GPS or RNP-0.3 required. DME/DME RNP-0.3 NA.
ASR MISSED APPROACH: Climb to 9000 via 172° course to EDEXE then via 262° course to MATNE then via 322° course to ABQ VORTAC and hold.

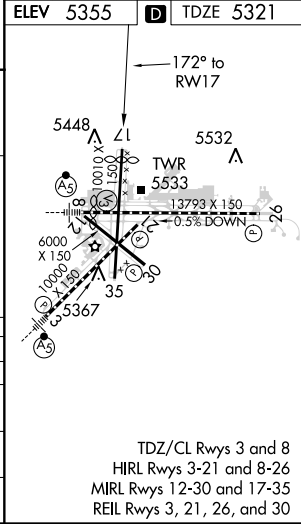
ATIS 118.0 257.7	ALBUQUERQUE APP CON 123.9 354.1	ALBUQUERQUE TOWER 120.3 351.9	GND CON 121.9 348.6	CLNC DEL 119.2 259.3
----------------------------	---	---	-------------------------------	--------------------------------



SW-1, 07 FEB 2013 to 07 MAR 2013

SW-1, 07 FEB 2013 to 07 MAR 2013

Procedure Turn NA	CADAT	9000	EDEXE	MATNE	ABQ
		172° crs	262° crs	322° crs	
GS 3.00° TCH 53	7100	7000	*LNAV only		
	5 NM	3.7 NM	1.3 NM	*1.3 NM to RWY17	
CATEGORY	A	B	C	D	
GLS DA	NA				
LNAV/VNAV DA	5700-1¼ 379 (400-1¼)				
LNAV MDA	5780-1	459 (500-1)	5780-1¼ 459 (500-1¼)	5780-1½ 459 (500-1½)	
CIRCLING	5840-1¼	485 (500-1¼)	5900-1½ 545 (600-1½)	5940-2 585 (600-2)	



TDZ/CL Rwy 3 and 8
 HIRL Rwy 3-21 and 8-26
 MIRL Rwy 12-30 and 17-35
 REIL Rwy 3, 21, 26, and 30