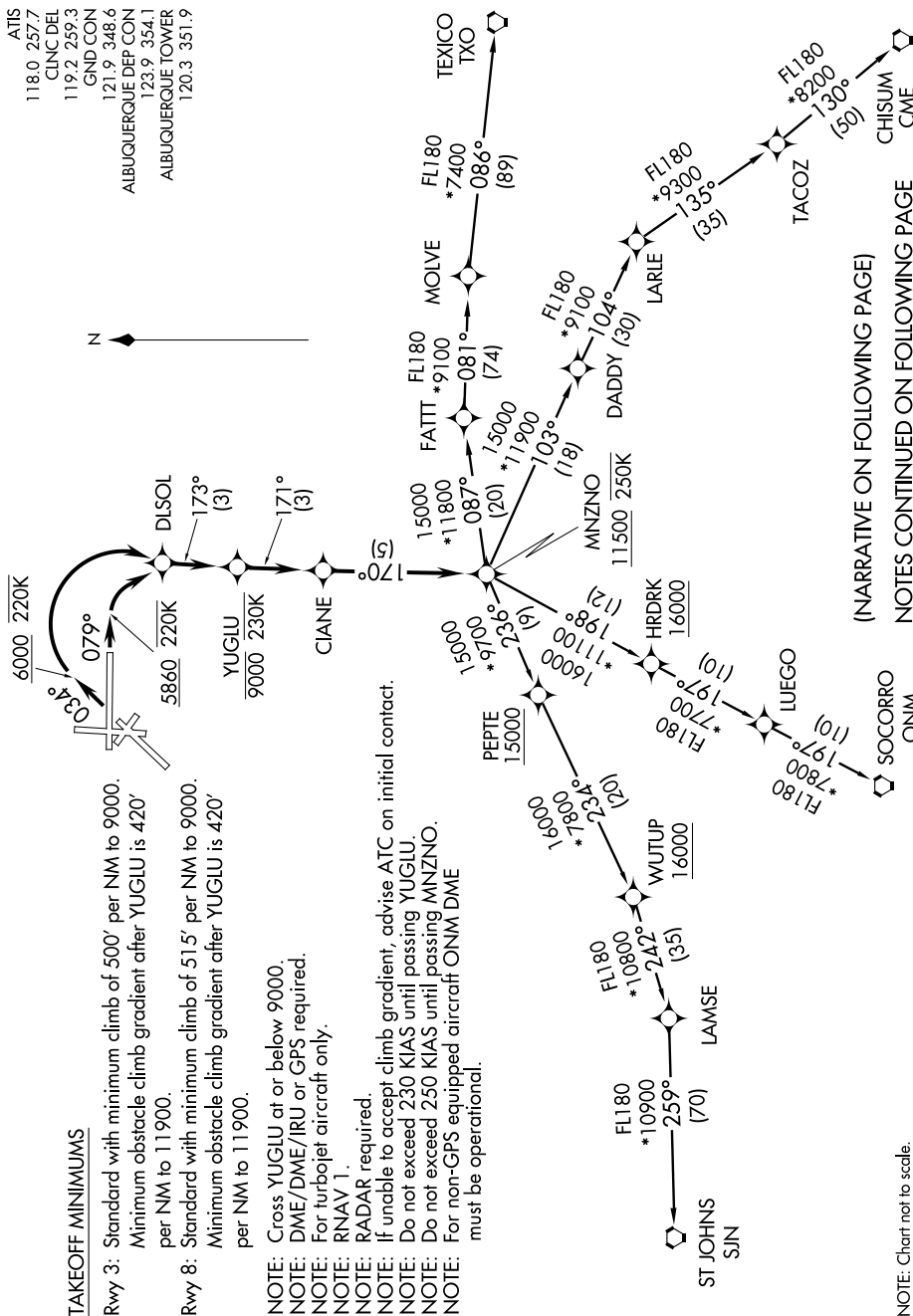


MNZNO ONE DEPARTURE (RNAV)

SW-1, 07 FEB 2013 to 07 MAR 2013



TAKEOFF MINIMUMS

- Rwy 3: Standard with minimum climb of 500' per NM to 9000. Minimum obstacle climb gradient after YUGLU is 420' per NM to 11900.
- Rwy 8: Standard with minimum climb of 515' per NM to 9000. Minimum obstacle climb gradient after YUGLU is 420' per NM to 11900.

- NOTE: Cross YUGLU at or below 9000.
- NOTE: DME/DME/IRU or GPS required.
- NOTE: For turbojet aircraft only.
- NOTE: RNAV 1.
- NOTE: RADAR required.
- NOTE: If unable to accept climb gradient, advise ATC on initial contact.
- NOTE: Do not exceed 230 KIAS until passing YUGLU.
- NOTE: Do not exceed 250 KIAS until passing MNZNO.
- NOTE: For non-GPS equipped aircraft ONM DME must be operational.

(NARRATIVE ON FOLLOWING PAGE)
NOTES CONTINUED ON FOLLOWING PAGE

NOTE: Chart not to scale.

MNZNO ONE DEPARTURE (RNAV)

SW-1, 07 FEB 2013 to 07 MAR 2013