

LZZRD ONE ARRIVAL (RNAV)

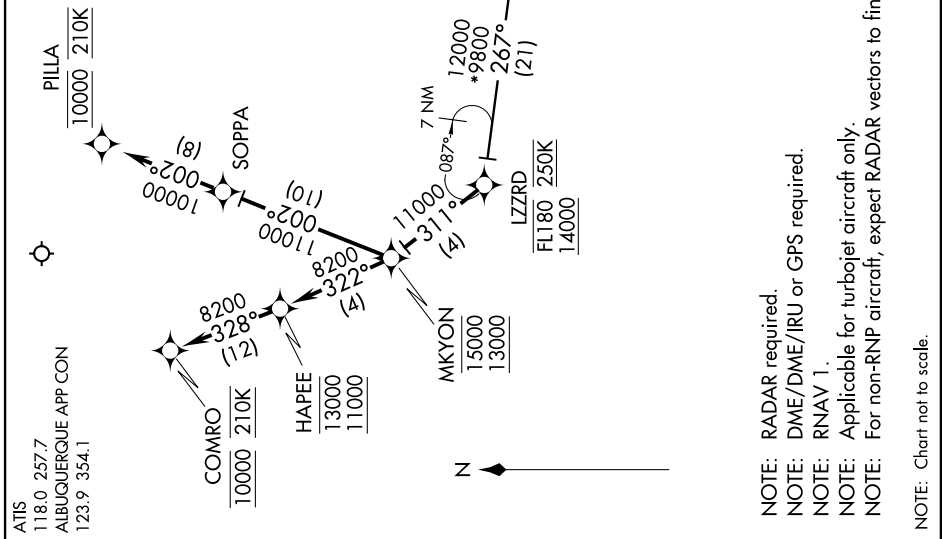
SW-1, 07 FEB 2013 to 07 MAR 2013

ARRIVAL ROUTE DESCRIPTION

CHISUM TRANSITION (CME.LZZRD1)

LANDING RWYS 3, 8: From over LZZRD on track 311° to cross MKYON at or above 13000 and at or below 15000, then on track 322° to cross HAPEE at or above 11000 and at or below 13000, then on track 328° to cross COMRO at 10000 at 210 KTS. Expect RNAV (RNP) approach.

LANDING RWYS 21, 26: From over LZZRD on track 311° to cross MKYON at or above 13000 and at or below 15000, then on track 002° to SOPPA, then on track 002° to cross PILLA at 10000 at 210 KTS. Expect RNAV (RNP) approach.



SW-1, 07 FEB 2013 to 07 MAR 2013