

LOWBO ONE ARRIVAL (RNAV)

SW-1, 07 FEB 2013 to 07 MAR 2013

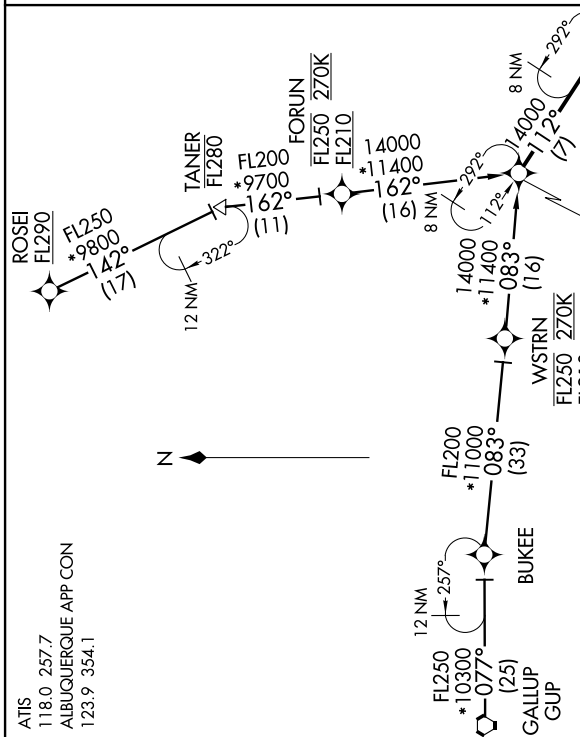
ARRIVAL ROUTE DESCRIPTION

GALLUP TRANSITION (GUP.LOWBO1)

ROSEI TRANSITION (ROSEI.LOWBO1)

LANDING RWYS 3, 8: From over LOWBO on track 112° to cross JOKLO at or above 14000 and at or below FL180 at 250 KTS, then on track 111° to ITUNE, then on track 125° to cross MUSCC at or above 9000 and at or below 12000, then on track 126° to cross DWNLD at or above 9000 and at or below 11000, then on track 125° to cross CMSTR at 9000 at 210 KTS. Expect RNAV (RNP) approach.

LANDING RWYS 21, 26: From over LOWBO on track 112° to cross JOKLO at or above 14000 and at or below FL180 at 250 KTS, then on track 111° to ITUNE, then on track 097° to cross SDUNX at or above 9000 and at or below 11000, then on track 097° to cross PASEO at or above 9000 and at or below 11000, then on track 097° to cross NODME at or below 10000, then on track 097° to cross NODME at 9000 at 210 KTS. Expect RNAV (RNP) approach.



NOTE: RADAR required.

NOTE: DME/DME/IRU or GPS required.

NOTE: RNAV 1.

NOTE: Applicable for turbojet aircraft only.

NOTE: GUP TRANSITION: For non-GPS equipped aircraft, RSK and SAF must be operational.

NOTE: ROSEI TRANSITION: For non-GPS equipped aircraft, SAF must be operational.

NOTE: For Non-RNP aircraft, expect RADAR vectors to final approach course.

LOWBO ONE ARRIVAL (RNAV)

SW-1, 07 FEB 2013 to 07 MAR 2013

NOTE: Chart not to scale.