

LARGO TWO DEPARTURE

SL-12 (FAA)

SW-1, 07 FEB 2013 to 07 MAR 2013

ATIS 118.0 257.7
 CLNC DEL 119.2 259.3
 ALBUQUERQUE TOWER 120.3 351.9
 ALBUQUERQUE DEP CON 124.4 263.15



RATTLESNAKE
 115.3 RSK
 Chan 100
 N36°44.90' W108°05.93'
 L-8, H-4

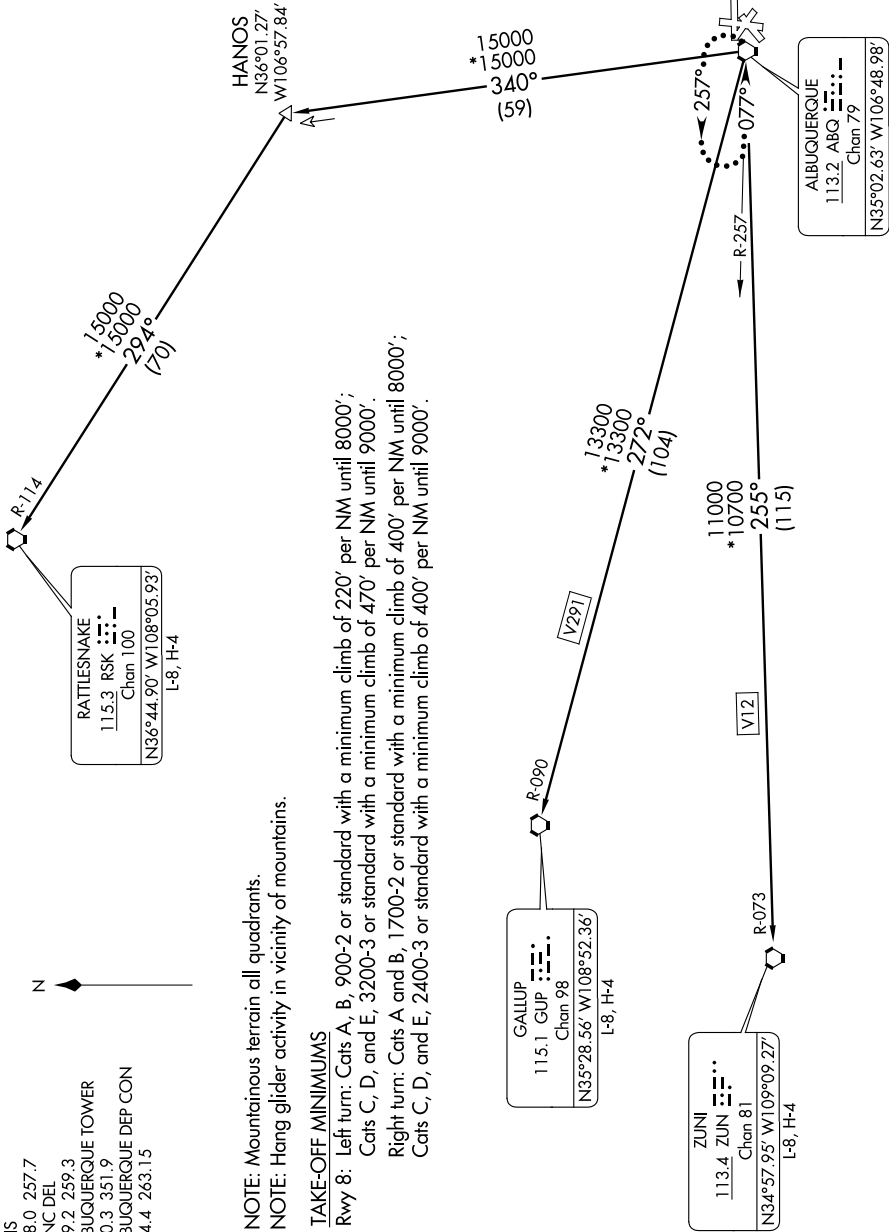
RATTLESNAKE
 115.3 RSK
 Chan 100
 N36°44.90' W108°05.93'
 L-8, H-4

NOTE: Mountainous terrain all quadrants.

NOTE: Hang glider activity in vicinity of mountains.

TAKE-OFF MINIMUMS

Rwy 8: Left turn: Cats A, B, 900-2 or standard with a minimum climb of 220' per NM until 8000';
 Cats C, D, and E, 3200-3 or standard with a minimum climb of 470' per NM until 9000'.
 Right turn: Cats A and B, 1700-2 or standard with a minimum climb of 400' per NM until 8000';
 Cats C, D, and E, 2400-3 or standard with a minimum climb of 400' per NM until 9000'.



(NARRATIVE ON FOLLOWING PAGE)

NOTE: Chart not to scale.