

LOC I-BZY <b>111.5</b>	APP CRS <b>034°</b>	Rwy Idg <b>10000</b>
		TDZE <b>5312</b>
		Apt Elev <b>5355</b>

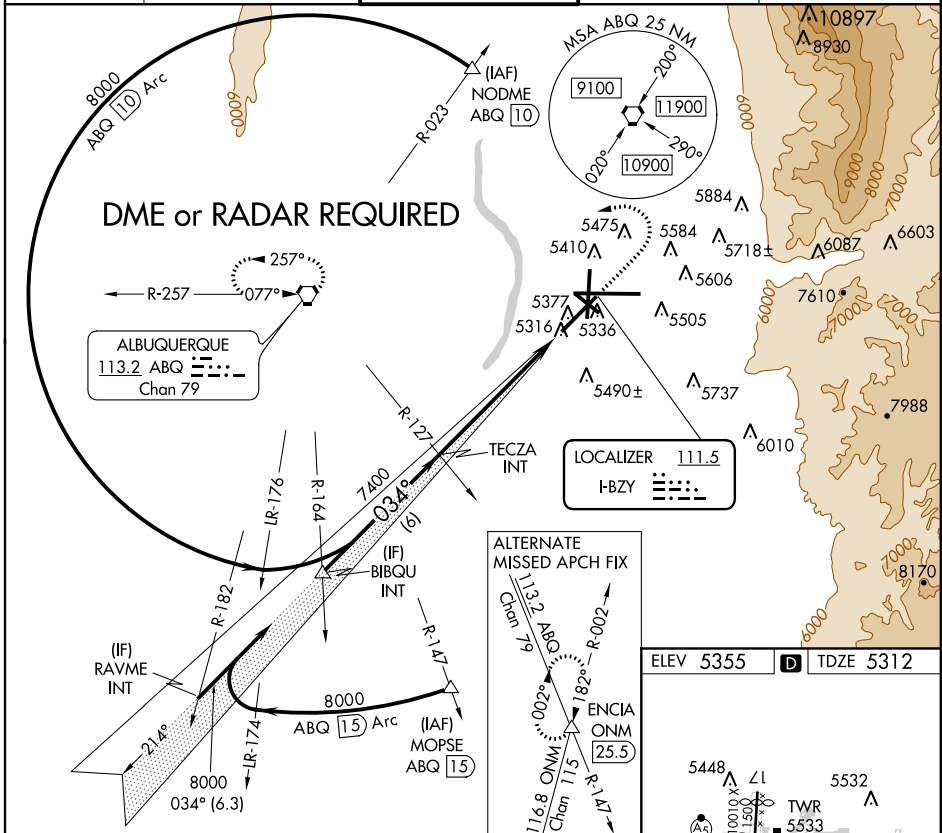
# ILS or LOC RWY 3

ALBUQUERQUE INTL SUNPORT (ABQ)

**ASR** For inoperative MALSRS, increase S-LOC 3 Cat D visibility to RVR 5000.

**MALSRS** MISSED APPROACH: Climb to 5900 then climbing left turn to 8000 direct ABQ VORTAC and hold, continue climb-in-hold to 8000.

ATIS <b>118.0 257.7</b>	ALBUQUERQUE APP CON <b>123.9 354.1</b>	ALBUQUERQUE TOWER <b>120.3 351.9</b>	GND CON <b>121.9 348.6</b>	CLNC DEL <b>119.2 259.3</b>
----------------------------	---	---	-------------------------------	--------------------------------



CATEGORY	A	B	C	D
	S-ILS 3 5512/18 200 (200-½)			
S-LOC 3	5600/24 288 (300-½)			5600/40 288 (300-¾)
	5840-1 485 (500-1)		5900-1½ 545 (600-1½)	5920-2 565 (600-2)
CIRCLING	5840-1 485 (500-1)		5900-1½ 545 (600-1½)	5920-2 565 (600-2)

ELEV 5355	TDZE 5312
TDZ/CL Rwy 3 and 8 HIRL Rwy 3-21 and 8-26 MIRL Rwy 12-30 and 17-35 REIL Rwy 3, 21, 26, and 30 FAF to MAP 6.3 NM	
Knots	60 90 120 150 180
Min:Sec	6:18 4:12 3:09 2:31 2:06

SW-1, 07 FEB 2013 to 07 MAR 2013

SW-1, 07 FEB 2013 to 07 MAR 2013