

HI-TACAN RWY 8

VORTAC ABQ 113.2 Chan 79	APCH CRS 077°	Rwy ldg 12,793 THRE 5315 Arpt Elev 5355
--	-------------------------	---

JAL-12 [USAF]

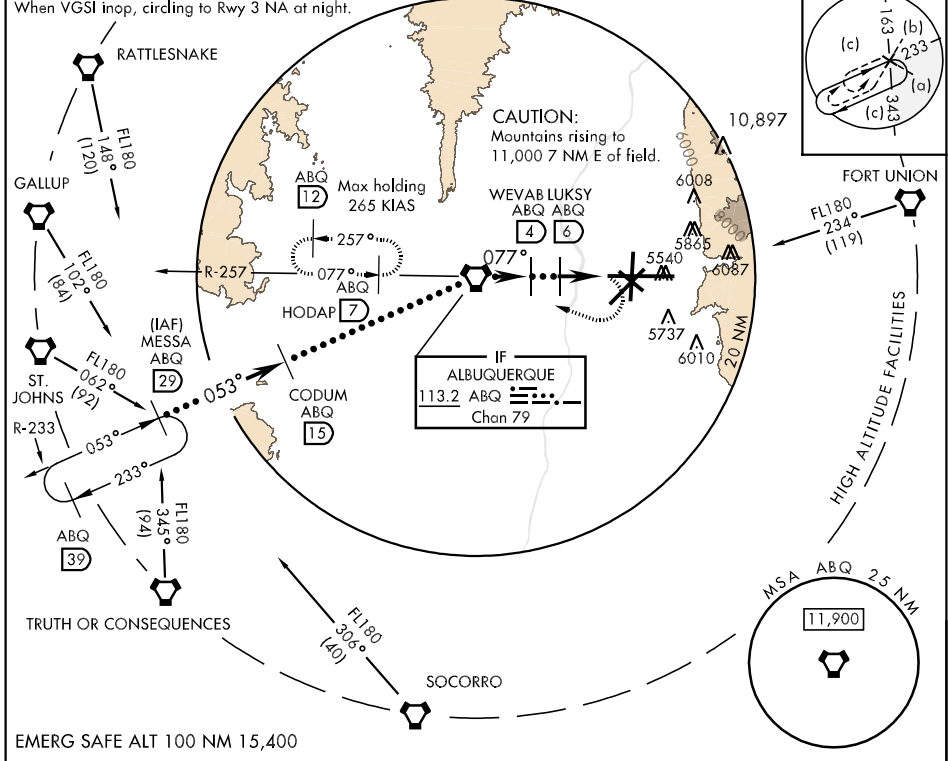
ALBUQUERQUE INTL SUNPORT (KABQ)

▼ * When ALS inop, increase CAT CDE RVR to 60, vis to 1½ miles.
** CAT E Not authorized E of Rwy 17-35.

MALSR MISSED APPROACH: Climb to 5800 then climbing right turn to 8000 direct ABQ VORTAC R-257 to HODAP/ABQ 7 DME and hold.

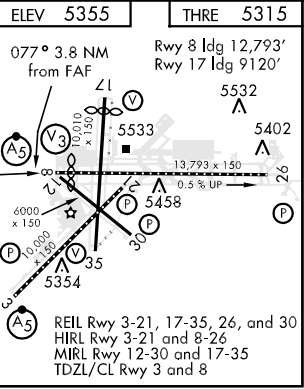
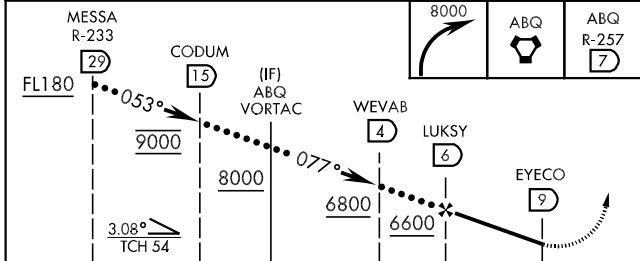
ATIS 118.0 257.7	ALBUQUERQUE APP CON 123.9 354.1	ALBUQUERQUE TOWER 120.3 351.9	GND CON 121.9 348.6	CLNC DEL 119.2 259.3	ASR
----------------------------	---	---	-------------------------------	--------------------------------	-----

When local altimeter is not received, procedure NA.
When VGSi inop, circling to Rwy 3 NA at night.



SW-1, 07 FEB 2013 to 07 MAR 2013

SW-1, 07 FEB 2013 to 07 MAR 2013



CATEGORY	C	D	E
S-8*	5700/35	385 (400%)	
CIRCLING**	5900-1½ 545 (600-1½)	5920-2	565 (600-2)

HI-TACAN RWY 8