

# HI-ILS or LOC RWY 8

LOC/DME I-SPT <b>111.9</b> Chan 56	APCH CRS <b>079°</b>	Rwy ldg <b>12,793</b> THRE <b>5315</b> Arpt Elev <b>5355</b>
--	-------------------------	--

JAL-12 [USAF]

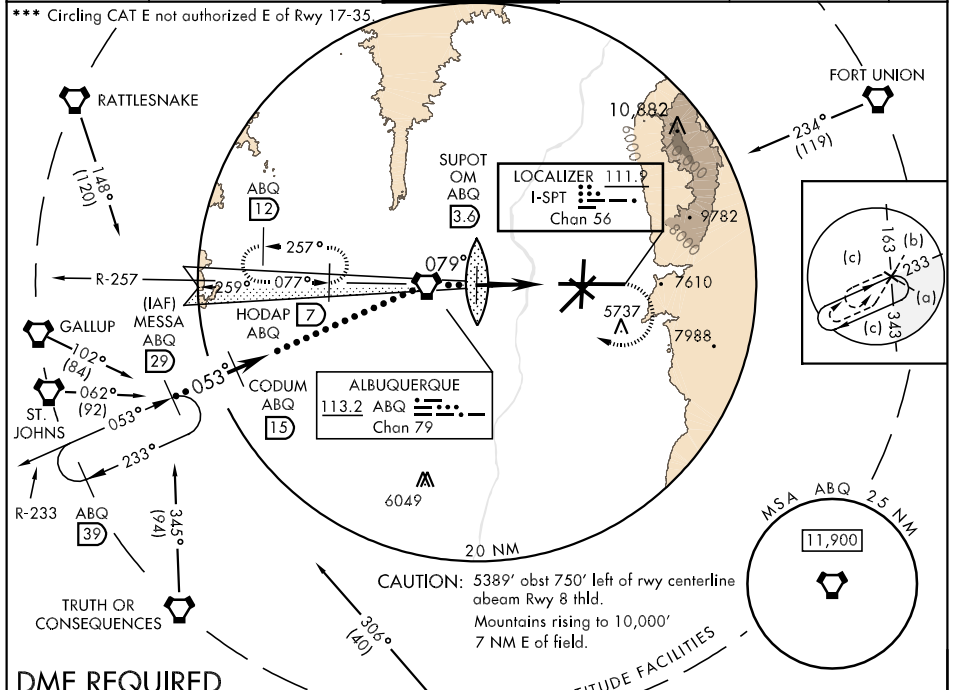
ALBUQUERQUE INTL SUNPORT (KABQ)

▼ \* When ALS inop, increase RVR to 40 and vis to ¾ mile.  
 \*\* When ALS inop, increase RVR to 60 and vis to 1½ mile.

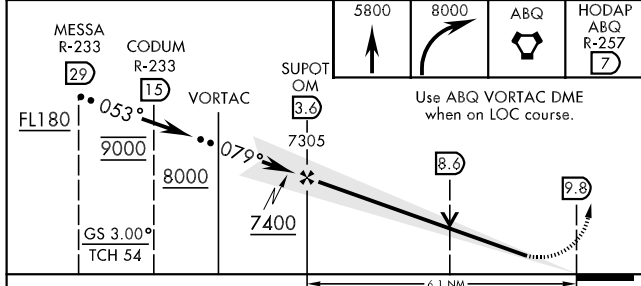


MISSED APPROACH: Climb to 5800 then climbing right turn to 8000 direct ABQ VORTAC and ABQ R-257 to HODAP/ABQ 7 DME and hold.

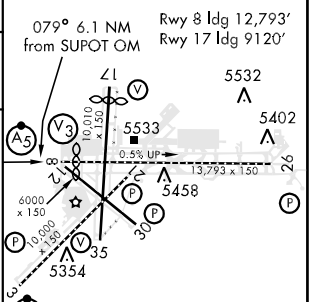
ATIS <b>118.0 257.7</b>	ALBUQUERQUE APP CON <b>123.9 354.1</b>	ALBUQUERQUE TOWER <b>120.3 351.9</b>	GND CON <b>121.9 348.6</b>	CLNC DEL <b>119.2 259.3</b>	ASR
----------------------------	---	---	-------------------------------	--------------------------------	-----



**DME REQUIRED**  
 EMERG SAFE ALT 100 NM 15,400



ELEV 5355	THRE 5315
-----------	-----------



CATEGORY	C	D	E
S-ILS 8 *	5524/24	209 (300-½)	
S-LOC 8 **	5720/40	405 (500-¾)	
CIRCLING ***	5900-1½ 545 (600-1½)	5920-2	565 (600-2)

LOC FAF to MAP 6.1 NM					
Knots	120	140	160	180	200
Min:Sec	3:03	2:37	2:17	2:02	1:50

# HI-ILS or LOC RWY 8

SW-1, 07 FEB 2013 to 07 MAR 2013

SW-1, 07 FEB 2013 to 07 MAR 2013