

FYSTA ONE DEPARTURE (RNAV)

SW-1, 07 FEB 2013 to 07 MAR 2013

ATIS
118.0 257.7
CLNC DEL
119.2 259.3
GND CON
121.9 348.6
ALBUQUERQUE TOWER
120.3 351.9
ALBUQUERQUE DEP CON
127.4 253.5

TAKEOFF OBSTACLE NOTES

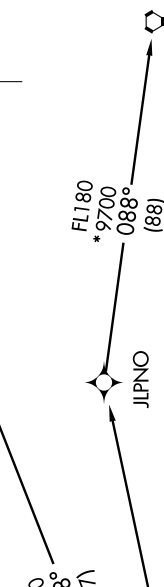
Rwy 21: Terrain beginning 159' from DER, 77' right of centerline, up to 5315' MSL.
Terrain beginning 199' from DER, 100' left of centerline, up to 5311' MSL.
Rwy 26: Sign 38' from DER, 431' left of centerline, 14' AGL/5314' MSL.

TAKEOFF MINIMUMS

Rwys 3, 8, 12, 17, 30, 35: NA - ATC.
Rwy 21: Standard with minimum climb of 500' per NM to 14000.
Rwy 26: Standard with minimum climb of 500' per NM to 14000.



FORT UNION
FTI



NOTE: TCC Transition: For non-GPS equipped aircraft FTI DME must be operational.

DEPARTURE ROUTE DESCRIPTION

TAKEOFF RUNWAY 21: Climb heading 214° to 6200, then climbing right turn direct BLUUN, cross BLUUN at or above 11000, then on track 061° to cross FYSTA at or above 14000, thence. . . .

TAKEOFF RUNWAY 26: Climb heading 259° to 7500, then climbing right turn direct BLUUN, cross BLUUN at or above 11000, then on track 061° to cross FYSTA at or above 14000, thence. . . .

. . . on assigned transition. Maintain FL200, expect filed altitude within ten minutes after departure.

FORT UNION TRANSITION (FYSTA1.FTI)
TUCUMCARI TRANSITION (FYSTA1.TCC)

NOTE: Do not exceed 240K until passing BLUUN.

NOTE: DME/DME/IRU or GPS required.

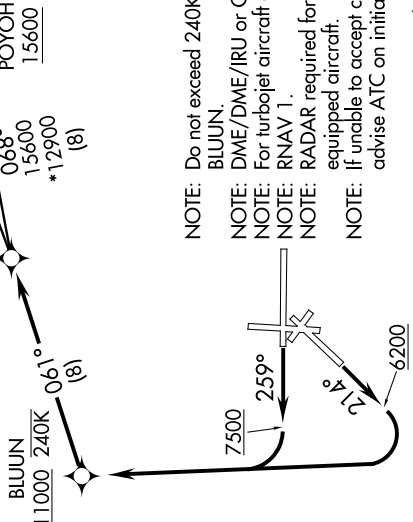
NOTE: For turbojet aircraft only.

NOTE: RNAV 1.

NOTE: RADAR required for non-GPS equipped aircraft.

NOTE: If unable to accept climb gradient, advise ATC on initial contact.

NOTE: Chart not to scale.



FYSTA ONE DEPARTURE (RNAV)

(FYSTA1.FYSTA) 13010

SW-1, 07 FEB 2013 to 07 MAR 2013