

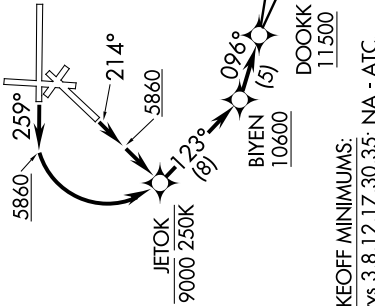
DOOKK ONE DEPARTURE (RNAV)

SL-12 (FAA)

SW-1, 07 FEB 2013 to 07 MAR 2013

TAKEOFF OBSTACLES NOTES

- Rwy 21: Terrain beginning 159' from DER, 77' right of centerline, up to 531.5' MSL. Terrain beginning 199' from DER, 100' left of centerline, up to 531.1' MSL.
- Rwy 26: Sign 38' from DER, 431' left of centerline, 14' AGL/531.4' MSL.



NOTE: For non-GPS equipped aircraft on: CME Transition: ONM DME must be operational.
TXO Transition: ABQ and ONM DME's must be operational.

TAKEOFF MINIMUMS:
Rwys 3,8,12,17,30,35: NA - ATC.
Rwy 21: Standard with minimum climb of 500' per NM to 9000. Minimum climb gradient after JETOK is 265' per NM to 11900.
Rwy 26: Standard with minimum climb of 500' per NM to 9000. Minimum climb gradient after JETOK is 265' per NM to 11900.

- NOTE: DME/DME/IRU or GPS required.
- NOTE: RNAV 1.
- NOTE: RADAR required.
- NOTE: For turboprop aircraft only.
- NOTE: If unable to accept climb gradient, advise ATC on initial contact.
- NOTE: Do not exceed 250K until passing JETOK.

DEPARTURE ROUTE DESCRIPTION

- TAKEOFF RUNWAY 21:** Climb heading 214°, then climb direct JETOK, cross JETOK at or below 9000, then on depicted route to cross DOOKK at or above 11500 thence. . . .
- TAKEOFF RUNWAY 26:** Climb heading 259° to 5860, then climbing left turn direct JETOK, cross JETOK at or below 9000, then on depicted route to cross DOOKK at or above 11500 thence. . . .
- on assigned transition. Maintain FL200, expect filed altitude ten minutes after departure.
- CHISUM TRANSITION (DOOKK1.CME)
- TEXICO TRANSITION (DOOKK1.TXO)



NOTE: Chart not to scale.

DOOKK ONE DEPARTURE (RNAV)

SW-1, 07 FEB 2013 to 07 MAR 2013