

WAAS CH 56302 W19A	APP CRS 191°	Rwy Idg THRE 280 Apt Elev 285
--	------------------------	---

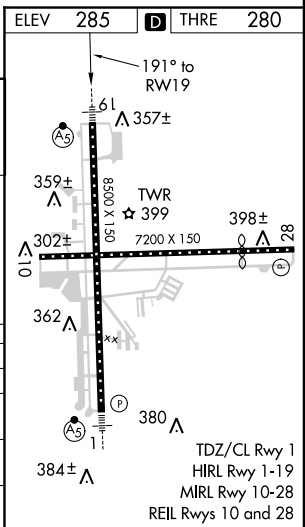
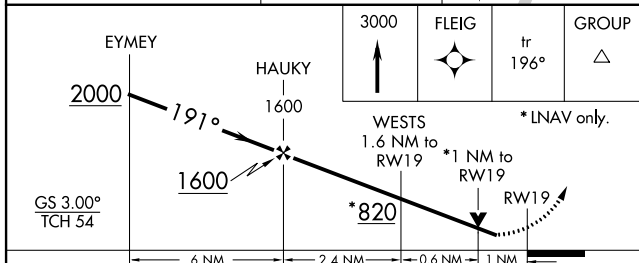
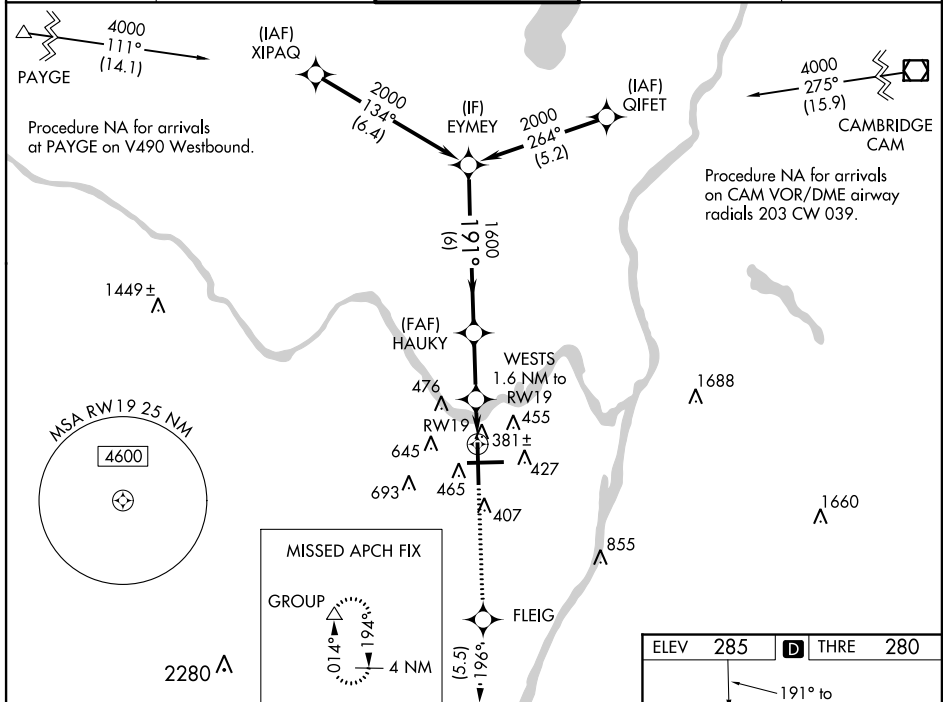
RNAV (GPS) Y RWY 19

ALBANY INTL (ALB)

For uncompensated Baro-VNAV systems, LNAV/VNAV NA below -18°C (0°F) or above 42°C (107°F). For inoperative MALS, increase LPV and LNAV/VNAV all Cals visibility to RVR 4500. Circling NA west of Rwy 1-19. DME/DME RNP-0.3 NA. Visibility reduction by helicopters NA.

MALSR MISSED APPROACH: Climb to 3000 direct FLEIG and on track 196° to GROUP and hold.

ATIS 120.45	ALBANY APP CON 132.825 307.2	ALBANY TOWER 119.5 257.8	GND CON 121.7 348.6	CLNC DEL 127.50
-----------------------	--	------------------------------------	-------------------------------	---------------------------



CATEGORY	A	B	C	D
LPV DA		561/40	281 (300-¾)	
LNAV/VNAV DA		571/40	291 (300-¾)	
LNAV MDA		640/40	360 (400-¾)	
CIRCLING	820-1 535 (600-1)		820-1½ 535 (600-1½)	840-2 555 (600-2)

NE-2, 07 FEB 2013 to 07 MAR 2013

NE-2, 07 FEB 2013 to 07 MAR 2013