


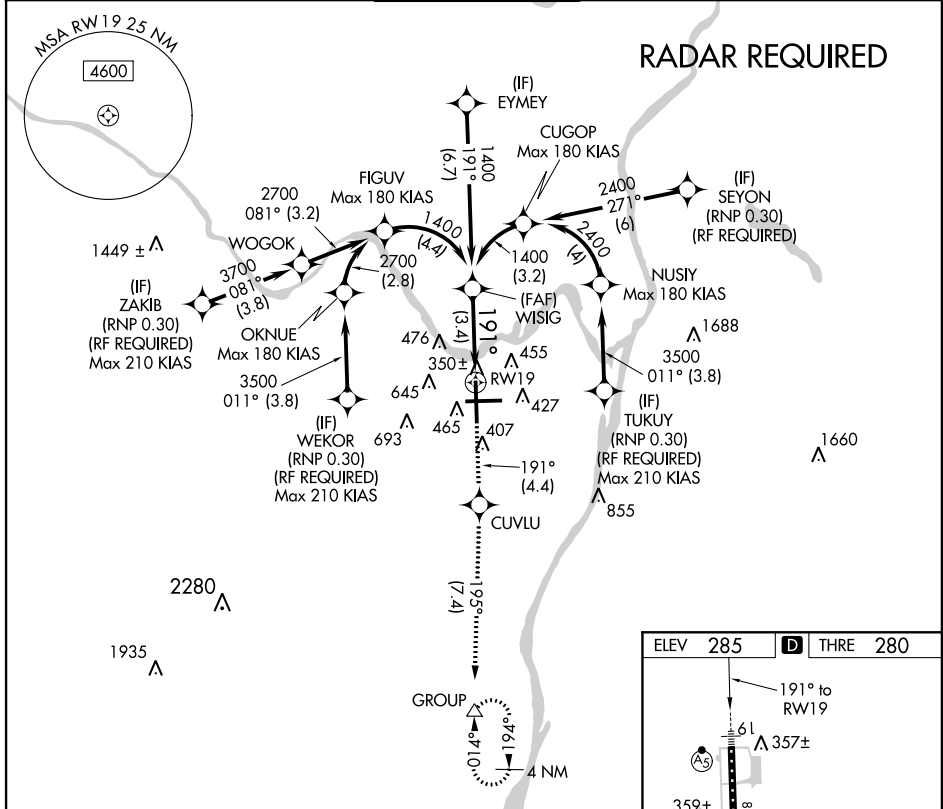
APP CRS	Rwy Idg	8500
191°	THRE	280
	Apt Elev	285

RNAV (RNP) Z RWY 19

ALBANY INTL (ALB)

<p>GPS required. For uncompensated Baro-VNAV systems, procedure NA below -15°C (3°F) or above 47°C (117°F). For inoperative MALSR, increase RNP 0.30 visibility to 1½.</p>	<p>MALSR</p> 	<p>MISSED APPROACH: Climb to 3000 on track 191° to CUVLU and on track 195° to GROUP and hold.</p>

ATIS 120.45	ALBANY APP CON 132.825 307.2	ALBANY TOWER 119.5 257.8	GND CON 121.7 348.6	CLNC DEL 127.50
-----------------------	--	------------------------------------	-------------------------------	---------------------------



NE-2, 07 FEB 2013 to 07 MAR 2013

NE-2, 07 FEB 2013 to 07 MAR 2013

