

APP CRS 011°	Rwy Idg 8500	THRE 284
	Apt Elev 285	

RNAV (RNP) Z RWY 1

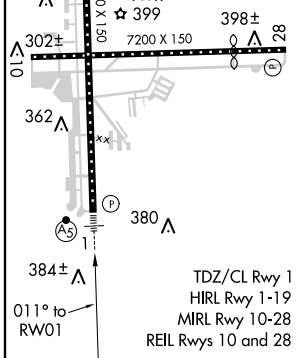
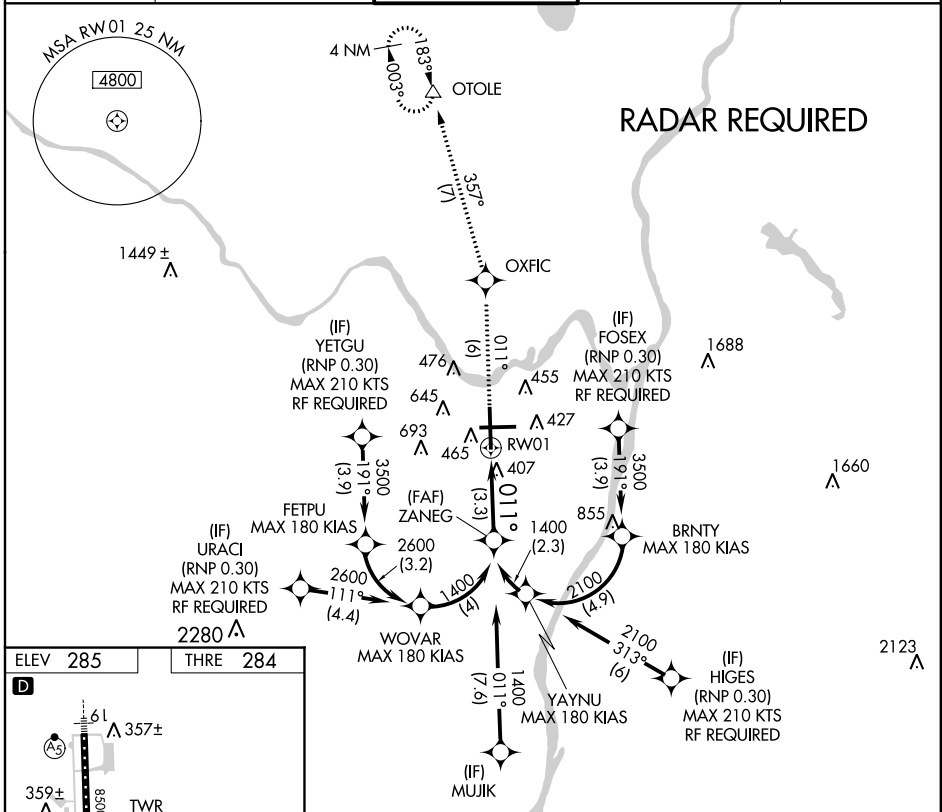
ALBANY INTL (ALB)

GPS required. For uncompensated Baro-VNAV systems, procedure MSA below -15°C (3°F) or above 47°C (117°F). For inoperative MALSR, increase RNP 0.15 visibility to 1½ and RNP 0.30 visibility to 1½.

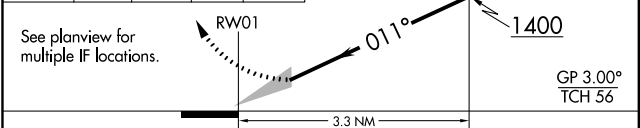


MISSED APPROACH: Climb to 3000 on track 011° to OXFIC and on track 357° to OTOLE and hold.

ATIS 120.45	ALBANY APP CON 132.825 307.2	ALBANY TOWER 119.5 257.8	GND CON 121.7 348.6	CLNC DEL 127.50
-----------------------	--	------------------------------------	-------------------------------	---------------------------



3000	OXFIC	OTOLE	ZANEG
↑	tr 011°	tr 357°	1400



CATEGORY	A	B	C	D
RNP 0.15 DA		656/40	372 (400-¾)	
RNP 0.30 DA		727/50	443 (500-1)	

AUTHORIZATION REQUIRED

NE-2, 07 FEB 2013 to 07 MAR 2013

NE-2, 07 FEB 2013 to 07 MAR 2013