

WAAS CH 78124 W28A	APP CRS 281°	Rwy Idg THRE 277 Apt Elev 285
--	------------------------	---

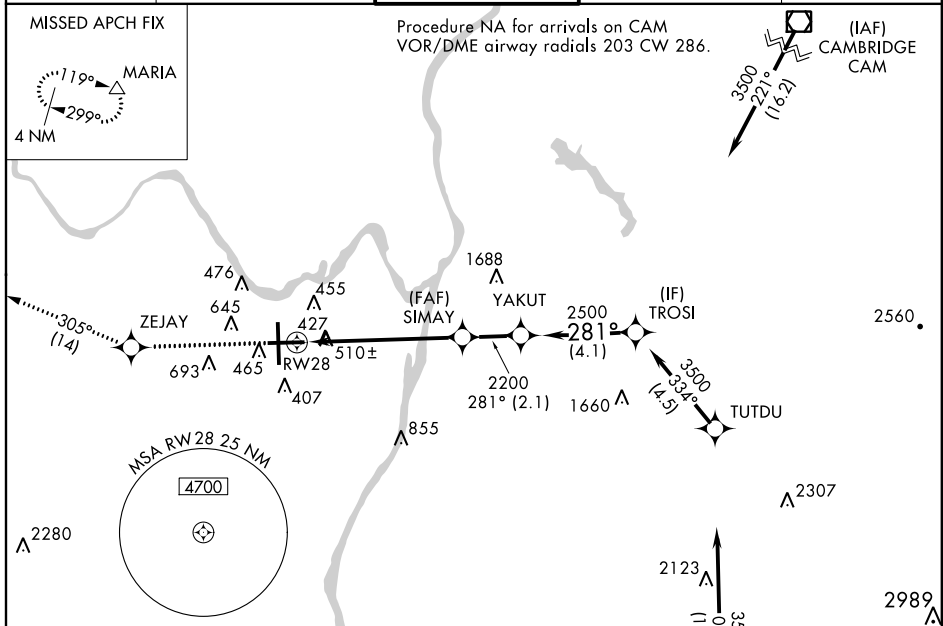
RNAV (GPS) RWY 28

ALBANY INTL (ALB)

For uncompensated Baro-VNAV systems, LNAV/VNAV NA below -18°C (0°F) or above 42°C (107°F). When VGSi inop, Straight-In procedure NA at night. Circling NA west of Rwy 1-19. DME/DME RNP-0.3 NA. Visibility reduction by helicopters NA.

MISSED APPROACH: Climb to 3500 direct ZEJAY and on track 305° to MARIA and hold.

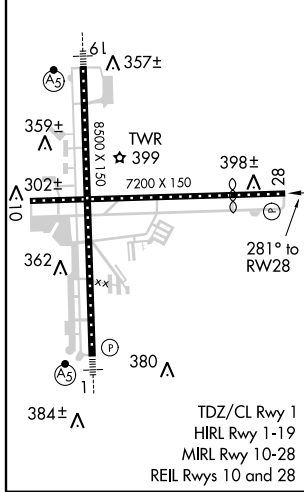
ATIS 120.45	ALBANY APP CON 132.825 307.2	ALBANY TOWER 119.5 257.8	GND CON 121.7 348.6	CLNC DEL 127.50
-----------------------	--	------------------------------------	-------------------------------	---------------------------



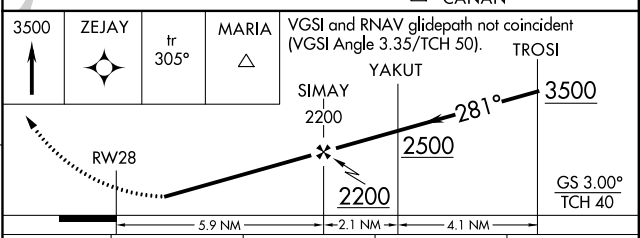
NE-2, 07 FEB 2013 to 07 MAR 2013

NE-2, 07 FEB 2013 to 07 MAR 2013

ELEV 285	D	THRE 277
----------	----------	----------



Procedure NA for arrivals at CANAN on V487 Southwest bound and V130 Southeast bound.



CATEGORY	A	B	C	D
LPV DA	775-1 ³ / ₄ 498 (500-1 ³ / ₄)			
LNAV/VNAV DA	817-1 ⁷ / ₈ 540 (600-1 ⁷ / ₈)			
LNAV MDA	760-1 483 (500-1)		760-1 ³ / ₈ 483 (500-1 ³ / ₈)	
CIRCLING	820-1 535 (600-1)		820-1 ¹ / ₂ 840-2 535 (600-1 ¹ / ₂) 555 (600-2)	