

LOC/DME I-ALB <b>109.5</b> Chan 32	APP CRS <b>191°</b>	Rwy Idg THRE Apt Elev	<b>8500</b> <b>280</b> <b>285</b>
--	------------------------	-----------------------------	---

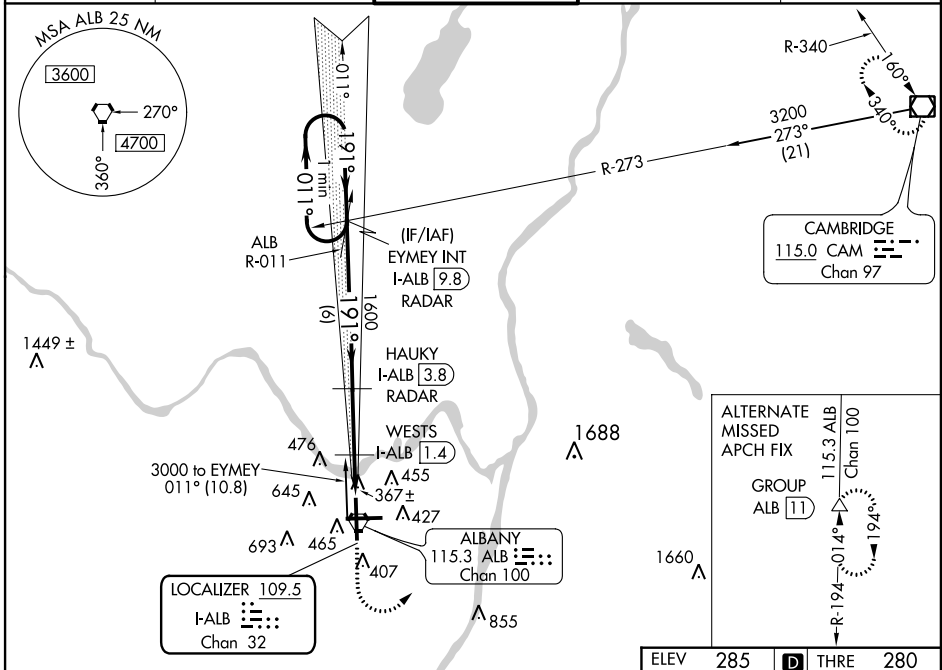
# ILS or LOC RWY 19

ALBANY INTL (ALB)

**▼** For inoperative MALS, increase S-ILS 19 all Cats visibility to 7/8 mile. Circling NA west of Rwy 1-19. DME or Radar required. Visibility reduction by helicopters NA.

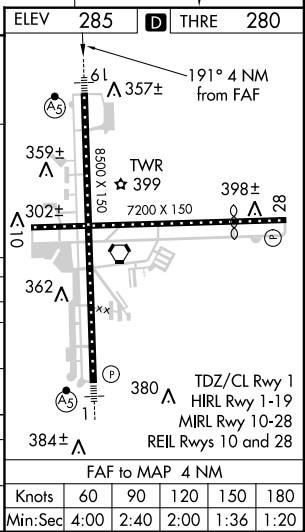
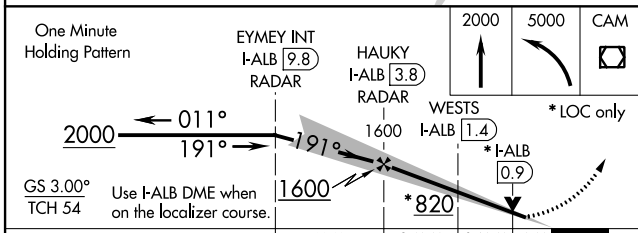
**MALSR** MISSED APPROACH: Climb to 2000 then climbing left turn to 5000 direct CAM VOR/DME and hold.

ATIS <b>120.45</b>	ALBANY APP CON <b>132.825 307.2</b>	ALBANY TOWER <b>119.5 257.8</b>	GND CON <b>121.7 348.6</b>	CLNC DEL <b>127.50</b>
-----------------------	--	------------------------------------	-------------------------------	---------------------------



NE-2, 07 FEB 2013 to 07 MAR 2013

NE-2, 07 FEB 2013 to 07 MAR 2013



CATEGORY	A	B	C	D
S-ILS 19	561/40 281 (300-¾)			
S-LOC 19	820/40	540 (600-¾)	820-1½	540 (600-1¼)
CIRCLING	820-1	535 (600-1)	820-1½	840-2 555 (600-2)
WESTS FIX MINIMUMS				
S-LOC 19	660/40 380 (400-¾)			
CIRCLING	820-1	535 (600-1)	820-1½	840-2 555 (600-2)

ELEV	285	THRE	280		
Knots	60	90	120	150	180
Min:Sec	4:00	2:40	2:00	1:36	1:20