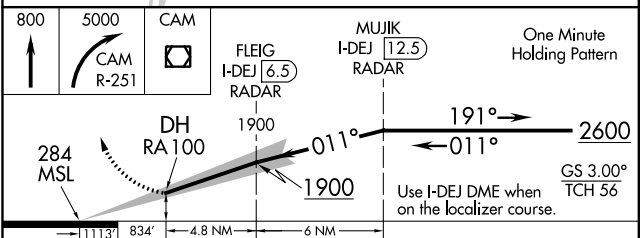
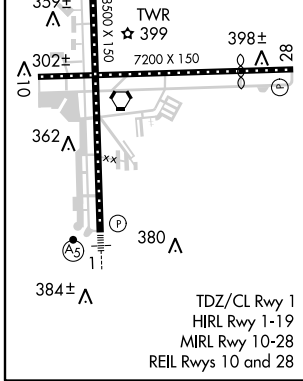
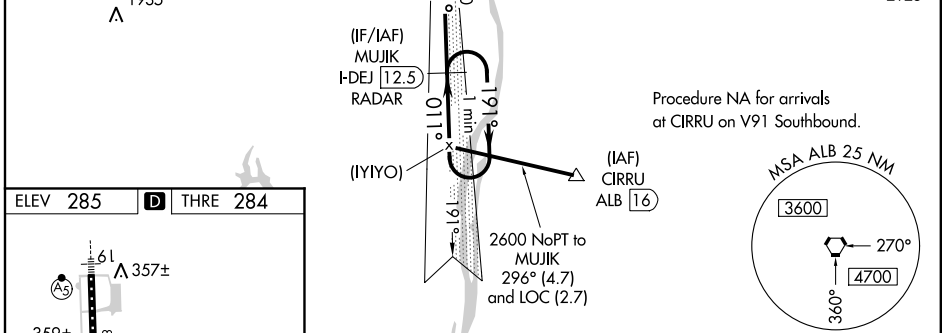
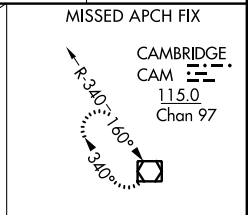
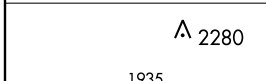
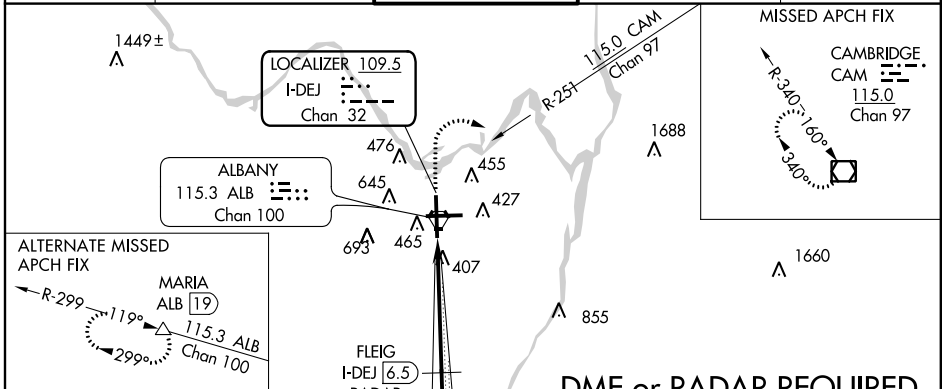


LOC/DME I-DEJ <b>109.5</b> Chan 32	APP CRS <b>011°</b>	Rwy Idg <b>8500</b> THRE <b>284</b> Apt Elev <b>285</b>
--	------------------------	--

**ILS RWY 1 (SA CAT II)**  
ALBANY INTL (ALB)

<p>⚠ Circling NA west of Rwy 1-19. DME or RADAR required. Reduced Lighting: Requires specific OPSPEC, MSPEC, or LOA approval and use of autoland or HUD to touchdown.</p>	<p>MALSR </p>	<p>MISSED APPROACH: Climb to 800 then climbing right turn to 5000 and on CAM VOR/DME R-251 to CAM VOR/DME and hold.</p>
---	-------------------	---

ATIS <b>120.45</b>	ALBANY APP CON <b>132.825 307.2</b>	ALBANY TOWER <b>119.5 257.8</b>	GND CON <b>121.7 348.6</b>	CLNC DEL <b>127.50</b>
-----------------------	--	------------------------------------	-------------------------------	---------------------------



CATEGORY	A	B	C	D
S-ILS 1	RA 100/12 100 DA 384			

**SA CATEGORY II ILS - SPECIAL AIRCREW & AIRCRAFT CERTIFICATION REQUIRED**

NE-2, 07 FEB 2013 to 07 MAR 2013

NE-2, 07 FEB 2013 to 07 MAR 2013